

IDENTIFICACION MOTOR - Engine's Identification

MODELO	BASE	CIL.	C.C	Ø PISTON	COJINETE BIELA <i>Bearing Connecting Rod</i>	COJINETE BANCADA <i>Bearing Crankshaft</i>	APRIETE DE MOTOR EN Kg/m <i>Torque engine Kg/m</i>			
							CULATA <i>Head</i>	VOLANTE <i>Flywheel</i>	BIELA <i>Connecting Rod</i>	CIGÜEÑAL <i>Crankshaft</i>
CHRISCRAFT										
185	GM 283	V8	4.6 L	98.42	50.80	58.38	8.8	8.2	4.5	9.5
200 - 215	GM 307	V8	4.9 L	98.42	53.34	62.19	8.8	8.2	6.2	9.5
200 - 225	GM 305	V8	5.0 L	95.00	53.34	62.19	8.8	8.2	6.2	9.5
210 - 230	GM 327	V8	5.4 L	101.60	53.34	62.19	8.8	8.2	6.2	9.5
250 - 300	GM 350	V8	5.7 L	101.60	53.34	62.19	8.8	8.2	6.2	9.5
330	GM 454	V8	7.4 L	108.00	55.88	69.81	10.8	6.2	6.8	10.8
CRUSADER- RIVA										
185	GM 283	V8	4.6 L	98.42	50.80	58.38	8.8	8.2	4.5	9.5
190 - 220 - 210	GM 305	V8	5.0 L	95.00	53.34	62.19	8.8	8.2	6.2	9.5
200	GM 307	V8	5.0 L	98.42	53.34	62.19	8.8	8.2	6.2	9.5
210-225-230-250	GM 327	V8	5.3 L	101.60	53.34	62.19	8.8	8.2	6.2	9.5
265 - 270 - 350	GM 350	V8	5.7 L	101.60	53.34	62.19	8.8	8.2	6.2	9.5
320	GM 427	V8	7.0 L	108.00	55.88	69.81	10.8	6.2	6.8	10.8
320-350-355-365	GM 454	V8	7.4 L	108.00	55.88	69.81	10.8	6.2	6.8	10.8
380	GM 502	V8	8.2 L	113.43	55.88	69.81	10.8	6.2	6.8	14.9
MERCURISER										
120	GM 153	L4	2.5 L	98.42	50.80	58.38	12.5-13.8	8.2 - 8.8	4 - 4.5	8.2 - 9.5
140	GM 181	L4	3.0 L	101.60	53.34	58.38	12.5-13.8	8.2 - 8.8	4 - 4.5	8.2 - 9.5
170-180-190-470	GM 224	L4	3.7 L	110.74	63.44	69.77				
165	GM250	L6	4.0 L	98.42	50.80-53.34	58.38	12.5-13.8	8.2 - 8.8	4 - 4.5	8.2 - 9.5
175 - 205	GM 262	V6	4.3 L	101.60	57.14	62.19	8.8	8.2	6.2	9.5
898-200-228-230	GM 305	V8	5.0 L	95.00	53.34	62.19	8.8	8.2	6.2	9.5
250-260-270-280	GM 350	V8	5.7 L	101.60	53.34	62.19	8.8	8.2	6.2	9.5
300 - 320 - 350	GM 350	V8	5.7 L	101.60	53.34	62.19	8.8	8.2	6.2	9.5
6.2	GM 377	V8	6.2 L	101.60	53.34	62.19	1°-3.5 - 2°-6 3°-9	10	1° = 2.7 Kg 2° = 45°	1°-2K / 2°-73° 3°-2K / 4°-43° / 5°-73°
325	GM 427	V8	7.0 L	108.00	55.88	69.81	10.8	6.2	6.8	10.8
330-370-400-425	GM 454	V8	7.4 L	108.00	55.88	69.81	10.8	6.2	6.8	10.8
8.1	GM 496	V8	8.1 L	108.00		69.81	Ver nota See remarks	10	1° = 3 Kg 2° = 90°	1°-3k / 2° 90° Screw 1°-3k / 2° 80° Stud
500 - 502	GM 502	V8	8.2 L	113.43	55.88	69.81	10.8	6.2	6.8	14.9
215 - 225 - 888	FD 302	V8	5.0 L	101.60	53.94	57.12	8.8-9.8	10.2 - 11.5	2.5 - 3.3	8.2 - 9.5
233 - 255	FD 351	V8	5.8 L	101.60	58.70	76.21	14.2-15.2	10.2 - 11.5	5.5 - 6	13 - 14
OMC										
120	GM 153	L4	2.5 L	98.42	50.80	58.38	12.5-13.8	8.2 - 8.8	4 - 4.5	8.2 - 9.5
140	GM 181	L4	3.0 L	101.60	53.34	58.38	12.5-13.8	8.2 - 8.8	4 - 4.5	8.2 - 9.5
165	GM 250	L6	4.0 L	98.42	50.80-53.34	58.38	12.5-13.8	8.2 - 8.8	4 - 4.5	8.2 - 9.5
155	GM 225	V6	3.6 L	95.25	50.80	63.50	9 a 11	6.2 - 6.9	4.2 - 5.5	13.2-16.5
170	GM 229	V6	3.8 L	95.00	53.34	62.19	8.8	8.2	6.2	9.5
175	GM 231	V6	3.8 L	96.52	57.14	63.50	8.8	8.2	6.2	9.5
205	GM 262	V6	4.3 L	101.60	57-14	62.19	8.8	8.2	6.2	9.5
185-200-210-220	GM 305	V8	5.0 L	95.00	53.34	62.19	8.8	8.2	6.2	9.5
250-260-270-290	GM 350	V8	5.7 L	101.60	53.34	62.19	8.8	8.2	6.2	9.5
310 - 330 - 335	GM 454	V8	7.4 L	108.00	55.88	69.81	10.8	6.2	6.8	10.8
160 - 175 - 190	FD 302	V8	5.0 L	101.60	53.94	57.12	8.8 - 9.8	10.2 - 11.5	2.5 - 3.3	8.2 - 9.5
235 - 240 - 250	FD 351	V8	5.8 L	101.60	58.70	76.21	14.2-15.2	10.2 - 11.5	5.5 - 6	13 - 14
295 - 340	FD 460	V8	7.5 L	110.70	63.24	75.95				
Nota: 1° - 3 kg / 2° 3 kg + 120° 3°- tornillos largos y medios 60° / 4°- tornillos cortos 30°							Remark: 1° - 3 kg / 2° 3 kg + 120° 3°- Long and medium screws 60° / 4°- short screws 30°			

IDENTIFICACION MOTOR - Engine's Identification

MODELO	BASE	CIL.	C.C	Ø	COJINETE BIELA <i>Bearing Connecting Rod</i>	COJINETE BANCADA <i>Bearing Crankshaft</i>	APRIETE DE MOTOR EN Kg/m <i>Torque engine Kg/m</i>			
							CULATA <i>Head</i>	VOLANTE <i>Flywheel</i>	BIELA <i>Connecting Rod</i>	CIGÜEÑAL <i>Crankshaft</i>
VOLVO PENTA										
3.0GL - 3.0GS	GM 181	L 4	3.0 L	101.60	53.34	58.38	12.5-13.8	8.2 - 8.8	4 - 4.5	8.2
155	GM 225	V6	3.6 L	95.25	50.80	63.50	9 a 11	6.2 - 6.9	4.2 - 4.5	13.2 - 16.5
175	GM 229	V6	3.8 L	95.00	53.34	62.19	8.8	8.2	6.2	9.5
205-431-432-434	GM 262	V6	4.3 L	101.60	57.14	62.19	8.8	8.2	6.2	9.5
200-211-225-231	GM 305	V8	5.0 L	95.00	53.34	62.19	8.8	8.2	6.2	9.5
500 - 501	GM 305	V8	5.0 L	95.00	53.34	62.19	8.8	8.2	6.2	9.5
255-260-261-271	GM 350	V8	5.7 L	101.60	53.34	62.19	8.8	8.2	6.2	9.5
280-290-311-570	GM 350	V8	5.7 L	101.60	53.34	62.19	8.8	8.2	6.2	9.5
740-7.4GL-7.4Gi	GM 454	V8	7.4 L	108.00	55.88	69.81	10.8	6.2	6.8	10.8
8.1	GM 496	V8	8.1 L	108.00		69.81	<i>Ver nota See remarks</i>	10	1° = 3 Kg 2° = 90°	1°-3k / 2° 90° Screw 1°-3k / 2° 80° Stud
8.2GL-8.2GSi	GM 502	V8	8.2 L	113.43	55.88	69.81	10.8	6.2	6.8	14.9
190-5.0FL-5.0Fi	FD 302	V8	5.0 L	101.60	53.94	57.12	8.8-9.8	10.2 - 11.5	2.5 - 3.3	8.2 - 9.5
240-5.8FL-5.8Fi	FD 351	V8	5.8 L	101.60	58.70	76.21	14.2-15.2	10.2 - 11.5	5.5 - 6	13 - 14
B 18		L 4	1.8 L	84.14	54.08	63.44	9	5	5.5	12.5
B 20		L 4	2.0 L	88.90	54.08	63.44	9	5	5.5	12.5
B 21		L 4	2.1 L	92.00	54.08	63.44	9	7.2	6.2	10.8
B 23		L 4	2.3 L	96.00	54.08	63.44	10.8	7.2	6.2	10.8
B 25		L 4	2.5 L	96.00	48.98	54.98	2+4+120°	7	2 + 90°	11
B 30		L 6	3.0 L	88.90	54.08	63.44	9	5	5.5	12.5
MD 1 A		L 1	0.445 L	79.37						
MD 1 B		L 1	0.560 L	88.90	53.96	66.64	11	70	6.5	4.5
MD 2 A		L 2	0.890 L	79.37						
MD 2 B		L 2	1.12 L	88.90	53.96	66.64	11	70	6.5	4.5
MD 3 B		L 3	1.168 L	88.90	53.96	66.64	11	70	6.5	4.5
MD 5		L 1	0.443 L	84.00	51.00	54.00	7	50	7	7
MD 6		L 2	0.631 L	70.00	50.00	50.00	7	18	5	5
MD 7 A		L 2	0.744 L	76.00	50.00	50.00	7	18	5	5
MD 7 B		L 2	0.744 L	76.00	50.00	50.00	7	18	5	5
MD 11		L 2	1.12 L	88.90	53.96	66.64	11	50	6.5	4.5
MD 17		L 3	1.68 L	88.90	53.96	66.64	11	59	6.5	4.5
MD 21		L 4	2.112 L	90.00	49.99	55/55.19	7	6.5	6	10
D 30		L 4	2.39 L	92.00	56.48	69.98	13	11.5	11.3	14
D 31		L 4	2.39 L	92.00	56.48	69.98	13	11.5	11.3	14
D 32		L 6	3.17 L	90.00	49.99	55/55.19	7	6.5	6	10
D 40		L 6	3.59 L	92.00	56.48	69.98	13	11.5	11.3	14
D 41		L 6	3.59 L	92.00	56.48	69.98	13	11.5	11.3	14
D 42		L 6	3.59 L	92.00	56.48	69.98	13	11.5	11.3	14
2001		L 1	0.43 L	79.00	48.00	60.00	2 - 7	6.5	7	2 - 6
2002		L 2	0.852	79.00	48.00	60.00	2 - 7	6.5	7	2 - 6
2003		L 3	1.278 L	79.00	48.00	60.00	2 - 7	6.5	7	2 - 6
2003 T		L 3	1.278 L	79.00	48.00	60.00	2 - 7	6.5	7	2 - 6

Nota: 1° - 3 kg / 2° 3 kg + 120°
3°- tornillos largos y medios 60° / 4°- tornillos cortos 30°

Remark: 1° - 3 kg / 2° 3 kg + 120°
3°- Long and medium screws 60° / 4°- short screws 30°

BASES MOTORES GM - GM Engine Blocks

Modelo motor - Engine model: 181 Standard (3.0L)

RECGM181 BASE MOTOR GM 3.0L y 3.0LX

Equipamiento standard base de motor.
Reemplaza Mercruiser, Volvo y OMC desde 1991 en adelante, con base GM.

DETALLES MOTOR:

- = Cubicaje: 3.0L (181 CID)
- = Potencia eje cigüeñal: 140 hp a 4800 rpm.
- = Retén cigüeñal; 1 pieza

EQUIPO STANDARD

- = Todos los componentes internos
- = Volante 14"
- = Culata
- = Tapa válvulas
- = Tapa distribución
- = Cáster de aceite
- = Bomba de agua



IMPORTANTE

Para substituir a los motores anteriores a 1989, con retén de cigüeñal de 2 piezas y con volante de menos diámetro, debemos substituir el motor de arranque y el acoplamiento del motor

RECGM181 Base Engine GM 3.0L & 3.0LX

Standard equipment base engine.
Replace Mercruiser, Volvo and OMC from 1991 up today, with base GM.

ENGINE DETAILS:

- = Displacement: 3.0L (181 CID)
- = Horse power: 140 hp @ 4800 rpm.
- = 1 piece crankshaft seal

STANDARD EQUIPMENT

- = All internal components
- = 14" Flywheel
- = Cylinder Head
- = Valve Cover
- = Timing Cover
- = Oil Pan
- = Water Pump

IMPORTANT

To replace the engines before 1989 with 2 pieces crankshaft seal and flywheel of less diameter, you must substitute the starter and the drive plate of the engine

Modelo motor - Engine model: 4.3L - 4.3LX & 4.3L MPI

RECGM262VORTEC BASE MOTOR GM 4.3L & 4.3LX

Equipamiento standard base de motor
Reemplaza Mercruiser, Volvo y OMC desde 1991 en adelante, Vortec 4.3 con tapa de distribución en composite.

DETALLES MOTOR:

- = Potencia eje cigüeñal: 226 hp a 4800 rpm.
- = Cubicaje: 4.3L (262 CID)
- = Retén cigüeñal; 1 pieza
- = Eje calibrado

EQUIPO STANDARD

- = Todos los componentes internos
- = Tapa válvulas
- = Tapa distribución
- = Cáster de aceite

PARA MOTORES MPI

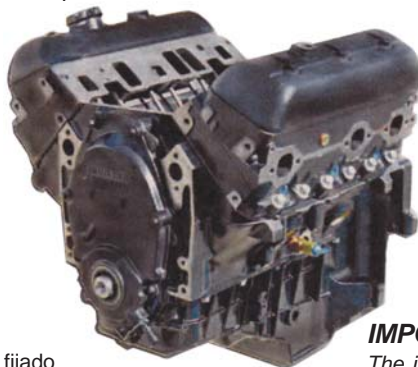
Pedir la ref. REC15253

Tapa distribucion con sensor

For engine MPI

Order ref. REC15253

Timing cover with sensor



IMPORTANTE

El colector de admisión de este motor está fijado a las culatas con 8 tornillos. Si el motor a substituir tiene 12 tornillos se debe ordenar:

- MP425036 Colector admisión carburador 4 cuerpos.
ó
- MP425024 Colector admisión carburador 2 cuerpos.
más
- MP001204 Tornillos colector

RECGM262VORTEC Base Engine GM 4.3L & 4.3LX

Standard equipment base engine.
Replace Mercruiser, Volvo and OMC from 1991 up today, Vortec 4.3 with composite timing cover.

ENGINE DETAILS:

- = Horse power: 226 hp @ 4800 rpm.
- = Displacement: 4.3L (262 CID)
- = 1 piece crankshaft seal
- = Balance shaft

STANDARD EQUIPMENT

- = All internal components
- = Valve covers
- = Timing cover
- = Oil Pan

IMPORTANT

The intake manifold in this engine is fixed to the heads with 8 screws. If the engine to substitute have 12 screws, you must order:

- MP425036 Intake manifold carburetor 4 bbl.
or
- MP425024 Intake manifold carburetor 2 bbl.
plus
- MP001204 Bolts for intake manifold

BASES MOTORES GM - GM Engine Blocks

Modelo motor - Engine model: 5.0L

RECGM305VORTEC BASE MOTOR GM 5.0L Base Engine GM 5.0L

Equipamiento standard base de motor
Reemplaza Mercruiser, Volvo y OMC
Carburación ó TBI desde 1996 en adelante.

DETALLES MOTOR:

- = Potencia eje cigüeñal: 250 hp a 4800 rpm.
- = Cubicaje: 5.0L (305 CID)
- = Acepta bomba mecánica de combustible
- = Culatas Vortec
- = Retén cigüeñal; 1 pieza
- = Colector de admisión de 8 tornillos

EQUIPO STANDARD

- = Todos los componentes internos
- = Tapas válvulas
- = Tapa distribución
- = Cáster de aceite

PARA MOTORES MPI

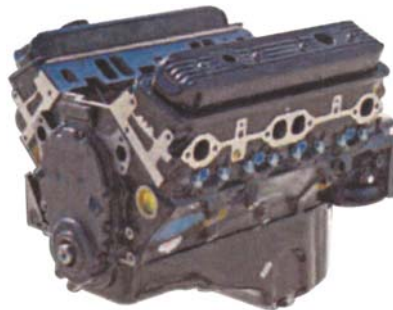
Pedir la ref. **REC15254**

Tapa distribucion con sensor

For engine MPI

Order ref. **REC15254**

Timing cover with sensor



Standard equipment base engine.
Replace Mercruiser, Volvo and OMC.
Carbureted or TBI Long Block
from 1996 up today.

ENGINE DETAILS:

- = Horse power: 250 hp @ 4800 rpm.
- = Displacement: 5.0L (305 CID)
- = Accepts mechanical fuel pump
- = Vortec heads
- = 1 piece crankshaft seal
- = 8 bolt style intake manifold

STANDARD EQUIPMENT

- = All internal components
- = Valve covers
- = Timing cover
- = Oil Pan

Modelo motor - Engine model: 5.7L

RECGM350PREVORTEC BASE MOTOR GM 5.7L Base Engine GM 5.7L

Equipamiento standard base de motor
Reemplaza Mercruiser, Volvo, OMC
y Crusader. Carburación ó TBI
desde 1987 hasta 1995.

DETALLES MOTOR:

- = Potencia eje cigüeñal: 275 hp a 4800 rpm.
- = Cubicaje: 5.7L (350 CID)
- = Acepta bomba mecánica de combustible
- = Retén cigüeñal; 1 pieza
- = Colector de admisión de 12 tornillos

EQUIPO STANDARD

- = Todos los componentes internos
- = Tapas válvulas
- = Tapa distribución metálica
- = Cáster de aceite



Standard equipment base engine.
Replace Mercruiser, Volvo, OMC and
Crusader. Carbureted or TBI Long
Block from 1987 up 1995.

ENGINE DETAILS:

- = Horse power: 275 hp @ 4800 rpm.
- = Displacement: 5.7L (350 CID)
- = Accepts mechanical fuel pump
- = 1 piece crankshaft seal
- = 12 bolt style intake manifold

STANDARD EQUIPMENT

- = All internal components
- = Valve covers
- = Metallic Timing cover
- = Oil Pan

BASES MOTORES GM - GM Engine Blocks

Modelo motor - Engine model: 5.7L

RECGM350VORTEC

BASE MOTOR GM 5.7L / Base Engine GM 5.7L

Equipamiento standard base de motor
Reemplaza Mercruiser, Volvo, OMC
y Crusader. Carburación ó TBI
desde 1996 en adelante.

PARA MOTORES MPI

Pedir la ref. **REC15254**

Tapa distribucion con sensor

For engine MPI

Order ref. **REC15254**

Timing cover with sensor

Standard equipment base engine.
Replace Mercruiser, Volvo, OMC and
Crusader. Carbureted or TBI Long
Block from 1996 up today.

ENGINE DETAILS:

- = Horse power: 330 hp @ 5000 rpm.
- = Displacement: 5.7L (350 CID)
- = Accepts mechanical fuel pump
- = 1 piece crankshaft seal
- = 8 bolt style intake manifold

STANDARD EQUIPMENT

- = All internal components
- = Valve covers
- = Composite Timing cover
- = Oil Pan

DETALLES MOTOR:

- = Potencia eje cigüeñal: 330 hp a 5000 rpm.
- = Cubicaje: 5.7L (350 CID)
- = Acepta bomba mecánica de combustible
- = Retén cigüeñal; 1 pieza
- = Colector de admisión de 8 tornillos

EQUIPO STANDARD

- = Todos los componentes internos
- = Tapas válvulas
- = Tapa distribución de composite
- = Cáster de aceite



Modelo motor - Engine model: 5.7L

RECGM350MPI

BASE MOTOR GM 5.7L

Base Engine GM 5.7L

Equipamiento standard base de motor
Reemplaza Mercruiser, Volvo, OMC
y Crusader MPI desde 1996 en adelante.

Standard equipment base engine.
Replace Mercruiser, Volvo, OMC and
Crusader. MPI Long Block from 1996
up today.

DETALLES MOTOR:

- = Potencia eje cigüeñal: 330 hp a 5000 rpm.
- = Cubicaje: 5.7L (350 CID)
- = Retén cigüeñal; 1 pieza
- = Requiere utilizar sensor de posicion del cigüeñal.
- = Colector de admisión tipo 8 tornillos con inyección MultiPort.

ENGINE DETAILS:

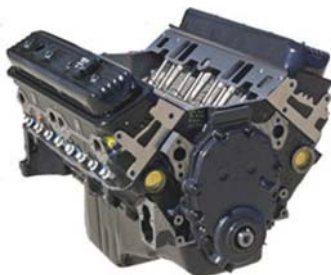
- = Horse power: 330 hp @ 5000 rpm.
- = Displacement: 5.7L (350 CID)
- = 1 piece crankshaft seal
- = Requires use of crank position sensor
- = 8 bolt style MultiPort injection intake manifold

EQUIPO STANDARD

- = Todos los componentes internos
- = Tapas válvulas
- = Tapa distribución de composite
- = Cáster de aceite

STANDARD EQUIPMENT

- = All internal components
- = Valve covers
- = Composite Timing cover
- = Oil Pan



Modelo motor - Engine model: 6.2L

RECGM6.2MPI

BASE MOTOR GM 6.2L

Base Engine GM 6.2L

Equipamiento standard base de motor
Reemplaza Mercruiser 6.2L MPI
desde 1996 en adelante.

Standard equipment base engine.
Replace Mercruiser 6.2L MPI Long
Block from 1996 up today.

DETALLES MOTOR:

- = Potencia eje cigüeñal: 355 hp a 4500 rpm.
- = Cubicaje: 6.2L (350 CID)
- = Retén cigüeñal; 1 pieza
- = Requiere utilizar sensor de posicion del cigüeñal.
- = Colector de admisión tipo 8 tornillos con inyección MultiPort.

ENGINE DETAILS:

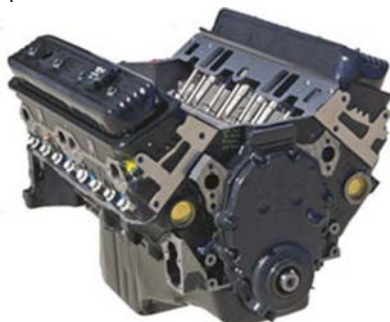
- = Horse power: 355 hp @ 4500 rpm.
- = Displacement: 6.2L (350 CID)
- = 1 piece crankshaft seal
- = Requires use of crank position sensor
- = 8 bolt style MultiPort injection intake manifold

EQUIPO STANDARD

- = Todos los componentes internos
- = Tapas válvulas
- = Tapa distribución de composite
- = Cáster de aceite

STANDARD EQUIPMENT

- = All internal components
- = Valve covers
- = Composite Timing cover
- = Oil Pan



BLOQUES Y CULATAS REMANUFACTURADOS GM y FORD

GM & Ford Remanufactured Long Blocks & Cylinder Heads Engine Blocks



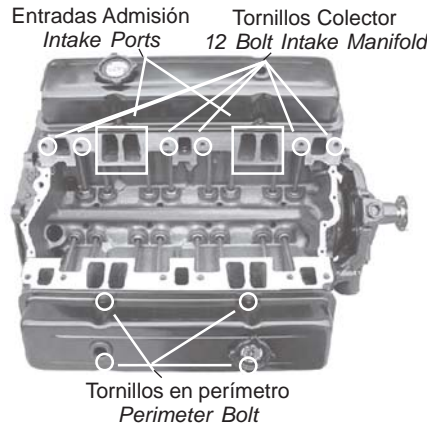
En FirstMate Marine, su completa satisfacción es nuestro primer y principal interés. Ofrecemos bloques, culatas y conjuntos con cárter y tapa de distribución. Si necesita un motor que no esté en nuestra lista, por favor llámenos. Los números de fundición en bloque y culatas nos ayudarán a suministrarles exactamente sus necesidades.

At FirstMate Marine, your complete satisfaction is our first and foremost concern, We offer long blocks, cylinder head kits, and some long block assemblies with oil pan and timing cover. If you need an engine that is not listed in our catalog, please call us. Cylinder head, and block casting numbers will assist us in supplying your exact needs.

Características

- = 12 meses Garantía Limitada
- = Pistones y Aros Nuevos
- = Levas y Lifters Marinos
- = Tapones de Expansión de Latón
- = Cojinetes Nuevos Cigüeñal, Biela y Levas
- = Cadeña y Piñones Distribución Nuevas
- = Bomba de Aceite Nueva
- = Juego de Juntas Marinas Nuevo
- = Bloque Rectificado y Calibrado
- = Cigüeñal Reacondicionado
- = Bielas Reacondionadas
- = Culatas Rectificadas
- = Muelles de Válvulas Nuevos
- = Prueba de giro
- = Prueba de Presión

Identificando tipo de motor Base GM Identifying type of engine base GM

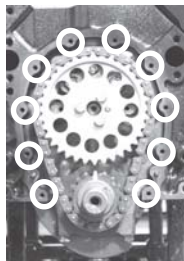


Engine Features

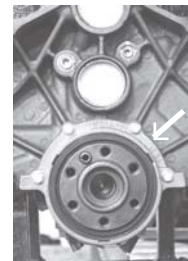
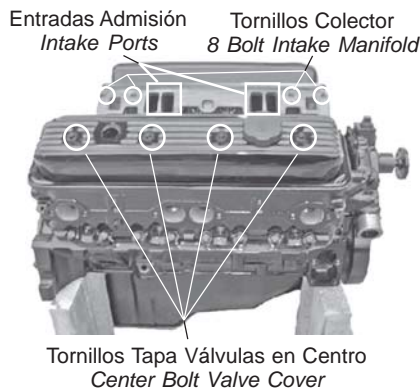
- = 12-month Limited Warranty
- = New Pistons, Moly Rings
- = Marine Cam and Lifters
- = Brass Block Plugs
- = New Rod, Main and Cam Bearings
- = New H.D. Timing Chain and Gears
- = New Oil Pump
- = New Marine Gasket Set
- = Block Resurfaced, Bored and Honed
- = Crankshaft Reconditioned
- = Connecting Rods Reconditioned
- = Heads Resurfaced
- = New Valve Springs
- = Spin Tested
- = Pressure Tested



Tapa Distribución
6 tornillos
6 Bolt
Timing Cover



Tapa Distribución
10 tornillos
10 Bolt
Timing Cover



Retén trasero
1 pieza
1 Piece
Rear Seal



Retén trasero
2 piezas
2 Pieces
Rear Seal

Identificando bloque y culata Identifying block & head numbers



Bloque FORD / Block FORD



Culatas / Heads



Bloque GM / Block GM

MOTORES REMANUFACTURADOS BASE FORD - Rebuilt engines Ford blocks					
AÑO APROX. <i>Approx. Year</i>	DESCRIPCIÓN <i>Description</i>	ROTACIÓN STANDARD <i>Standard rotation</i>	CULATA <i>Cylinder head</i>	NÚMERO de BLOQUE <i>Block casting number</i>	NÚMERO de CULATA <i>Cylinder head number</i>
140 / 2.3L - 4 en línea / 4 in line					
87-88	1 Retén trasero cigüeñal <i>1 rear seal crankshaft</i>	No disponible N/A	FIRH6052		E5ZE E6ZE E59E E68R
302 / 5.0L - V8					
68-81	Modelo antiguo. Número de cigüeñal ha de ser 2M, 2MA, 2MAB. <i>Early style. Crank casting numbers must be 2M, 2MA, 2MAB</i>	FIRFO-302LA	FIRH6061	D4DE-AA D8YE-A3A D9DE-E3A D5ZY-AA	DOOE D2OE C9TE D34E D44E
81-95	Bujía Ø 14 mm. Lifters planos. Potencia estimada de 180 a 200hp. Orden de encendido 1,5,4,2,6,3,7,8. Número de cigüeñal ha de ser 2MAE. <i>Ø 14 mm. spark plug. Flat tappets. Crank casting numbers must be 2MAE. Firing order 1,5,4,2,6,3,7,8</i>	FIRFO-302LB	FIRH6062 FIRH6062A	E1AE-AA E5AE E0AE E6SE	E5AE, F3JE-CA D7OE, D8OE DETE E5AE-CA, E5AS, D8AE E7TE, E5TE
95-98	Motores Inyección y Carburación. Varilla aceite en un lado del motor. Lifters planos. Lleva el árbol de levas del 5.8 (351). Orden de encendido 1,3,7,2,6,5,4,8 <i>Firing order 1,3,7,2,6,5,4,8. Has a 351 camshaft. Flat tappet, Dipstick on side of block</i>	FIRFO-302LD	FIRH6062 FIRH6062A	F1SE	F3JE-CA F3JE-CE D8OE D7OE-DA E8JL-AA E5AE E7TE, E5TE
351 / 5.8L - V8					
69-94	Bujía Ø 14 mm. Varilla aceite en el cárter ó tapa delantera. Lifters planos. Potencia estimada de 235 a 250hp. <i>Ø 14 mm. spark plug. Flat tappets. Standard 351 engine. Dipstick in pan oil or front cover</i>	FIRFO-351LA	FIRH6063 FIRH6064 FIRH6064A	D4AE-AA D4AE-DA D9AE-ED E3AE-BA E4AE	D8OE D7OE-DA E5AE-CA D8OE E5TE, E7TE,
460 / 7.5L - V8					
78-90	Bujía Ø 14 mm. Lifters planos. Tornillo debajo los balancines. 2 retenes traseros. Potencia estimada de 300 a 340hp. Números de cigüeñal deben ser 3Y ó 3YAABC <i>Ø 14 mm. spark plug. Late style. Crank casting numbers must be 3Y or 3YAABC</i>	FIRFO-460LB	FIRH6065	D9TE	D3VE-A2A D6TE-DA
NOTA: La letra "T" en la referencia de los bloques de motor significa que vienen con la tapa de distribución, carter, bomba de aceite y tubo de aspiración instalada. <i>The letter "T" in the reference of the engine blocks means that includes: Timing cover, oil pan, oil pump and pickup tube installed.</i>					

GENERAL MOTORS

MOTORES REMANUFACTURADOS BASE GM - Rebuilt engines GM blocks					
AÑO APROX. <i>Aprox. Year</i>	DESCRIPCIÓN <i>Description</i>	ROTACIÓN STANDARD <i>Standard rotation</i>	CULATA <i>Cylinder head</i>	NÚMERO de BLOQUE <i>Block casting number</i>	NÚMERO de CULATA <i>Cylinder head number</i>
153 / 2.5L - 4 en línea / 4 in line					
62-86		No disponible N/A	FIRH6001		*770,*952,*031
			FIRH6002		*198,*519,*433 *889,*988,*306 *998
181 / 3.0L - 4 en línea / 4 in line					
75-90	Retén trasero cigüeñal 2 piezas <i>2 pieces rear seal crankshaft</i>	No disponible N/A	FIRH6003	*087, *886 *678, *104 *446, *613 *080, *746	*748,*954,*950 *758,*087,*852 *531
90-04	Retén trasero cigüeñal 1 pieza <i>1 piece rear seal crankshaft</i>	No disponible N/A	FIRH6004	*613, *080	*619, *770
229 / 3.8L - V6					
80-84	Lifters planos, varilla en el bloque, retenes traseros de 2 piezas. Potencia estimada de 175hp. <i>Flat tappet, dipstick in block, 2 rear seals. Valve covers bolt around perimeter. Aprox. 175hp.</i>		FIRGM229LA FIRH6005	471594	471595 14020553
250 / 4.1L - 6 en línea / 6 in line					
70-80	Lifters planos, retenes traseros de 2 piezas. Potencia estimada de 160hp. <i>Flat tappet, 2 rear seals. Aprox. 160hp.</i>		FIRGM250LA FIRH6007	3850817 473483 377127 366855, *575 348675, *466	3962084 3927763 331184 *052
262 / 4.3L - V6					
85-86	Retenes traseros de 2 piezas. Tapa de válvulas montada en el centro. Potencia estimada de 175 a 205hp. <i>2 rear main seals. Central valve cover. Aprox. 175 to 205hp.</i>		FIRGM262LA FIRH6009	14071177	17079268 *107, *476
86-88	Retenes traseros de 2 piezas. Tapa de válvulas montada en el centro. Potencia estimada de 175 a 205hp. <i>2 rear main seals. Central valve cover. Aprox. 175 to 205hp.</i>		FIRGM262LB FIRH6009 FIRGM262LBT	14088553 *683	14079268 14131996 14094768 *107, *476 *103, *066
NOTA:				* = últimos dígitos - last digits	
La letra "T" en la referencia de los bloques de motor significa que vienen con la tapa de distribución, carter, bomba de aceite y tubo de aspiración instalada. <i>The letter "T" in the reference of the engine blocks means that includes: Timing cover, oil pan, oil pump and pickup tube installed.</i>					

GENERAL MOTORS

MOTORES REMANUFACTURADOS BASE GM - Rebuilt engines GM blocks						
AÑO APROX. <i>Aprox. Year</i>	DESCRIPCIÓN <i>Description</i>	ROTACIÓN STANDARD <i>Standard rotation</i>	CULATA <i>Cylinder head</i>	NÚMERO de BLOQUE <i>Block casting number</i>	NÚMERO de CULATA <i>Cylinder head number</i>	
262 / 4.3L - V6 (Continuación)						
87-92	Todos los lifters de rodillos. 1 retén trasero. Tapa válvulas con tornillos en el centro. Potencia estimada de 175 a 205hp. Tapa distribución de 10 tornillos. Colector admisión de 12 tornillos. <i>1 piece rear main seal. Roller cam engine. 10 bolt Timing cover. 12 bolt intake.</i>	FIRGM262LH FIRGM262LHT	FIRH6009	14093611 10105867 10066011 *756,*256,*073 *683,*061	14131996 14094768 *107, *476 *103, *066	
92-96	Lifters de rodillos sin eje calibrado. Bomba de combustible eléctrica. Colector admisión de 12 tornillos. Potencia estimada de 175 a 205hp. <i>Roller cam engine with wide intake. 12 bolt intake. Electric fuel pump. Aprox. 175 to 205hp.</i>	FIRGM262LF	FIRH6011	*061,*073, *756	*064, *181 *209, *626	
92-99	Lifter de rodillo con eje calibrado . Tiene 6 ó 10 tornillos en tapa distribución. 14 en cárter y 12 en colector de admisión. <i>Roller cam engine with balance shaft. 6 or 10 bolt timing cover, 14 oil pan and 12 intake manifold.</i>	FIRGM262LI FIRGM262LIT	FIRH6011	*196, *359 *534, *535	*181, *209, *064	
96-99	VORTEC. Lifter de rodillo con eje calibrado . Tiene 6 tornillos en tapa distribución, 10 en el cárter de aceite y 8 en el colector de admisión. <i>Roller cam engine with balance shaft 10224542. Has 6 bolt timing cover, 10 bolt oil pan rail and 8 in intake manifold. 175 & 205 hp aprox.</i>	FIRGM262LG FIRGM262LGT	FIRH6010	*090	*772,*140	
00-09	Lifter de rodillo de fundición con eje calibrado . Tiene 6 tornillos en tapa de distribución y 8 en el colector de admisión. <i>Roller cam engine with balance shaft. Has roller rocker casting. Has 6 bolt timing cover and 8 bolt intake manifold.</i>	FIRGM262LJ FIRGM262LJT	FIRH6014	*090M	*113	
305 / 5.0L - V8						
AÑO APROX. <i>Aprox. Year</i>	DESCRIPCIÓN <i>Description</i>	ROTACIÓN STANDARD <i>Standard rotation</i>	CONTRA-ROTACIÓN <i>Reverse rotation</i>	CULATA <i>Cylinder head</i>	NÚMERO de BLOQUE <i>Block casting number</i>	NÚMERO de CULATA <i>Cylinder head number</i>
76-85	2 piezas reten trasero, tornillos de tapa de válvula montados en el perímetro. Potencia estimada de 200 a 230HP. <i>2 piece rear main seal. Valve covers bolt around perimeter. 200 & 230 hp aprox.</i>	FIRGM305LA FIRGM305LAT	FIRGM305RA FIRGM305RAT	FIRH6015 FIRH6015A	14016381 14010203 14010202 14010201 361797, *371,*776,*777 *778,*909,*979	14022601 14022301 14014416 462424 357841 *354,*434,*741 *416,*450,*513
NOTA:					* = últimos dígitos - last digits	
La letra "T" en la referencia de los bloques de motor significa que vienen con la tapa de distribución, carter, bomba de aceite y tubo de aspiración instalada. <i>The letter "T" in the reference of the engine blocks means that includes: Timing cover, oil pan, oil pump and pickup tube installed.</i>						

GENERAL MOTORS

MOTORES REMANUFACTURADOS BASE GM - <i>Rebuilt engines GM blocks</i>						
AÑO APROX. <i>Aprox. Year</i>	DESCRIPCIÓN <i>Description</i>	ROTACIÓN STANDARD <i>Standard rotation</i>	CONTRA-ROTACIÓN <i>Reverse rotation</i>	CULATA <i>Cylinder head</i>	NÚMERO de BLOQUE <i>Block casting number</i>	NÚMERO de CULATA <i>Cylinder head number</i>
305 / 5.0L - V8 (Continuación)						
85-87	Llifers planos , 1 retén trasero, tornillos de tapa de válvula montados en el perímetro. Potencia estimada de 200 a 230hp. <i>With carburetor, 1 piece rear main seal. Valve covers bolt around perimeter. 200 & 230hp aprox. Double check rear main seal.</i>	FIRGM305LB	FIRGM305RB	FIRH6015	14102058, 14093627, 14088551, *535	14022601 14022301 14014416 *434, *741
		FIRGM305LBT		FIRH6015A		*450,*513, *416
87-99	12 tornillos en colector admisión, tapa distribución metálica de 10 tornillos, 1 retén trasero, Tapa de válvulas con tornillos montados en el centro. <i>1 piece rear main seal. Valve covers bolt down center. 10 bolt metal timing cover. 12 bolt intake.</i>	FIRGM305LC	FIRGM305RC	FIRH6017A	14102058 14093627 14088551, *535	*081 Deben cambiarse las dos culatas <i>Must be replaced both Cylinder Heads</i>
		FIRGM305LCT		FIRH6017A		*187
87-99	Con 10 tornillos en tapa de distribución de plástico. 12 tornillos en colector de admisión. <i>10 bolt plastic timing cover. 12 bolt intake. 200 & 230 hp aprox.</i>	FIRGM305LD		FIRH6017A	14102058 14093627 14088551, *535	*081 Deben cambiarse las dos culatas <i>Must be replaced both Cylinder Heads</i>
				FIRH6017A		*187
96-12	VORTEC. Retén trasero 1 pieza Con 8 tornillos en colector de admisión. Tapa de distribución de plástico de 10 tornillos. <i>1 piece rear main seal. 8 bolt intake. 10 bolt Plastic timing cover.</i>	FIRGM305LF		FIRH6018	*878, *880	*620, *059, *520
		FIRGM305LFT				
350 / 5.7L - V8						
67-85	Varilla en la parte derecha o izquierda del bloque. 2 piezas reten trasero, Tornillos de tapa de válvula montados en el perímetro. Potencia estimada de 260hp. <i>2 pieces rear main seal. Valve covers bolt around perimeter. 4 bolt main. 260 hp aprox.</i>	FIRGM350LAF	FIRGM350RAF	FIRH6021	*245, *379, *010, *014, *678, *388, *618	*993, *624, *882, *487
		FIRGM350LAFT	FIRGM350RAFT			
86-87	1 retén trasero. Tornillos de tapa de válvulas montados en perímetro. Potencia estimada de 260hp. <i>1 piece rear main seal. Valve covers bolt around perimeter. 2 bolt main. 260 hp aprox.</i>	FIRGM350LBF	FIRGM350RBF	FIRH6021	14101148 14093638 14088548 10054727, *526	*993, *624, *882, *487
		FIRGM350LBFT				
* = últimos dígitos - last digits						
NOTA:						
La letra "T" en la referencia de los bloques de motor significa que vienen con la tapa de distribución, carter, bomba de aceite y tubo de aspiración instalada. <i>The letter "T" in the reference of the engine blocks means that includes: Timing cover, oil pan, oil pump and pickup tube installed.</i>						

GENERAL MOTORS

MOTORES REMANUFACTURADOS BASE GM - <i>Rebuilt engines GM blocks</i>						
AÑO APROX. <i>Approx. Year</i>	DESCRIPCIÓN <i>Description</i>	ROTACIÓN STANDARD <i>Standard rotation</i>	CONTRA-ROTACIÓN <i>Reverse rotation</i>	CULATA <i>Cylinder head</i>	NÚMERO de BLOQUE <i>Block casting number</i>	NÚMERO de CULATA <i>Cylinder head number</i>
350 / 5.7L - V8 (Continuación)						
88-95	12 tornillos colector de admisión, 1 retén trasero, tornillos de tapa de válvula montados en el centro. Tapa de distribución de metal. Potencia estimada de 260 hp. <i>1 piece rear main seal. Valve covers bolt down center. 2 bolt main. Has metal timing cover. 12 bolt intake. 260 hp aprox.</i>	FIRGM350LC	FIRGM350RC	FIRH6023	14101148 14093638 14088548 10054727, *526	*193, *083, *217
		FIRGM350LCT	FIRGM350RCT			
95-99	1 retén trasero, 12 tornillos colector de admisión. Tapa de distribución de plástico con 6 tornillos. Lifters de rodillo. Bomba de gasolina mecánica ó eléctrica. Potencia aprox 260HP. <i>1 piece rear main seal. Roller cam. 6 bolt timing cover plastic. Mechanical or electric fuel pump. 12 bolt intake. 260 hp aprox.</i>	FIRGM350LE		FIRH6023	*880	*193, *083, *217
		FIRGM350LET		No Vortec No Vortec		
96-12	1 retén trasero, 8 tornillos colector de admisión. Tapa de distribución de plástico con 6 tornillos. Bomba de gasolina mecánica ó eléctrica. Potencia estimada de 260HP <i>1 piece rear main seal. 6 bolt timing cover plastic. 8 bolt intake. Mechanical or electric fuel pump. 260 hp aprox.</i>	FIRGM350LF		FIRH6013	*880	*906, *062
		FIRGM350LFT		Modelo Vortec Vortec model		
454 / 7.4L - V8						
73-90	Toma de admisión ovalada, bloque IV Generación, tomas de entrada pequeñas 1-5/8", 2 piezas retén trasero. Tapa de distribución de 10 tornillos 2 piece rear main seal. Oval intake port heads. Block IV Generation , 10 bolt timing cover. Flat tapped.	FIRGM454LAS	FIRGM454RA	FIRH6031	14005445 3999293 3999289 3963512 3916321 361959 14005445 *286,*289*775	6272292 353049 336781 14081045 14092360 348236 6272292 353049 336781, *186,*039,*416
		FIRGM454LAST	FIRGM454RAT			
91-97	Bloque V generación, toma de admisión ovalada, lifters planos, 1 retén trasero. Tapa de distribución de 10 tornillos <i>1 piece rear main seal. Oval intake port heads. 10 bolt timing cover.</i>	FIRGM454LB	FIRGM454RB	FIRH6033	10114182 *297, 313	10114156 *932
		FIRGM454LBT	FIRGM454RBT			
* = últimos dígitos - last digits						
NOTA: La letra "T" en la referencia de los bloques de motor significa que vienen con la tapa de distribución, carter, bomba de aceite y tubo de aspiración instalada. <i>The letter "T" in the reference of the engine blocks means that includes: Timing cover, oil pan, oil pump and pickup tube installed.</i>						

GENERAL MOTORS

MOTORES REMANUFACTURADOS BASE GM - Rebuilt engines GM blocks						
AÑO APROX. Aprox. Year	DESCRIPCIÓN Description	ROTACIÓN STANDARD Standard rotation	CONTRA-ROTACIÓN Reverse rotation	CULATA Cylinder head	NÚMERO de BLOQUE Block casting number	NÚMERO de CULATA Cylinder head number
454 / 7.4L - V8 (Continuación)						
91-97	Bloque V generación, H.O Series (Magnum), 1 retén trasero, 10 tornillos en la tapa de distribución. Potencia estimada de 360HP. <i>1 piece rear main seal. 10 bolt timing cover 360 hp aprox.</i>	FIRGM454LC FIRGM454LCT		FIRH6033	*182	*156,*932
96-99	Bloque VI generación, 1 retén trasero. Lifter de rodillo, 6 tornillos en tapa de distribución. Bomba de combustible eléctrica. Potencia estimada de 330hp. <i>1 piece rear main seal. Roller cam engine. Gen VI, 6 bolt timing cover. Electric fuel pump. 330 hp aprox.</i>	FIRGM454LD FIRGM454LDT		FIRH6036	*297, 313	*279
96-03	Bloque VI generación, 1 retén trasero. 6 tornillos en tapa de distribución. Potencia estimada de 330hp. <i>1 piece rear main seal. Gen VI, 6 bolt timing cover.</i>	FIRGM454LH		FIRH6033	*297	*156, 932
496 / 8.1L - V8						
00-11	VORTEC. No H.O. Potencia 375hp. <i>VORTEC. Not for H.O. 375 hp.</i>	FIRGM4960CT		FIRH4608 (Babor) FIRH4609 (Estribor)	*110	*162
00-11	VORTEC. Sólo H.O. Potencia 420hp. <i>VORTEC. Only for H.O. 420 hp.</i>	FIRGM4961CT		FIRH4608 (Babor) FIRH4609 (Estribor)	*110	*162
502 / 8.2L - V8						
91-98	Base standard reemplazo 8.2L. <i>Standard base to replace 8.2L</i>	FIRGM502LA		FIRH6037	*859	*088,*188
					* = últimos dígitos - last digits	
NOTA:						
La letra "T" en la referencia de los bloques de motor significa que vienen con la tapa de distribución, carter, bomba de aceite y tubo de aspiración instalada. <i>The letter "T" in the reference of the engine blocks means that includes: Timing cover, oil pan, oil pump and pickup tube installed.</i>						

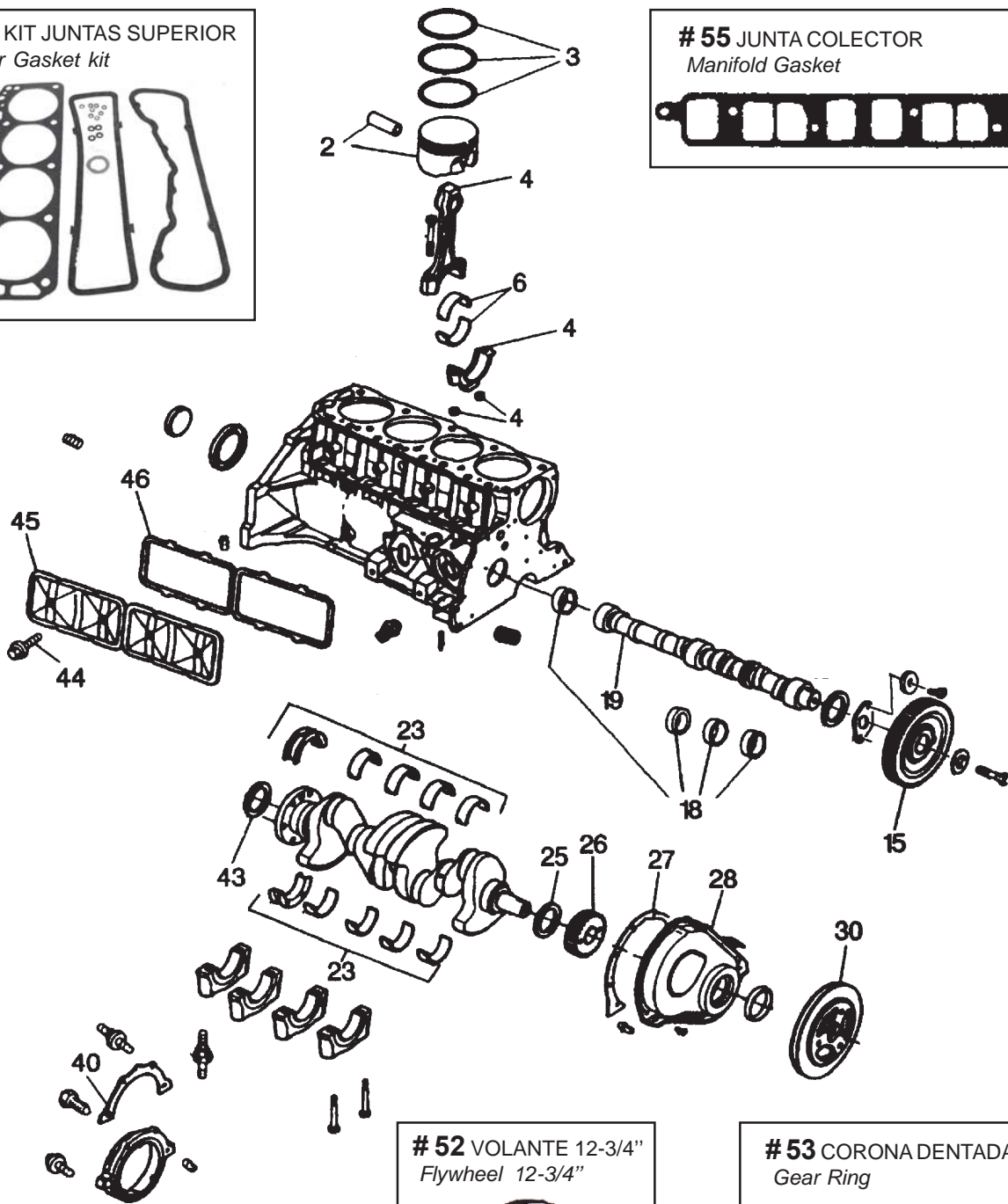
GENERAL MOTORS

BASE MOTOR 181 CID, 3.0L y 250 CID, 4.1L - *Block engine 181 CID, 3.0L & 250 CID, 4.1L*

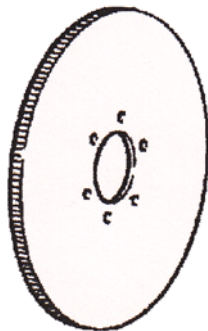
54 KIT JUNTAS SUPERIOR
Upper Gasket kit



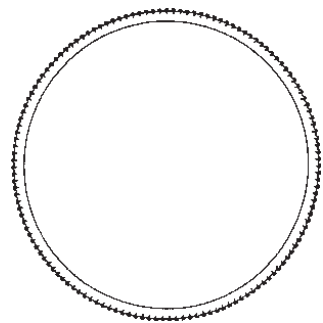
55 JUNTA COLECTOR
Manifold Gasket



52 VOLANTE 12-3/4"
Flywheel 12-3/4"



53 CORONA DENTADA
Gear Ring



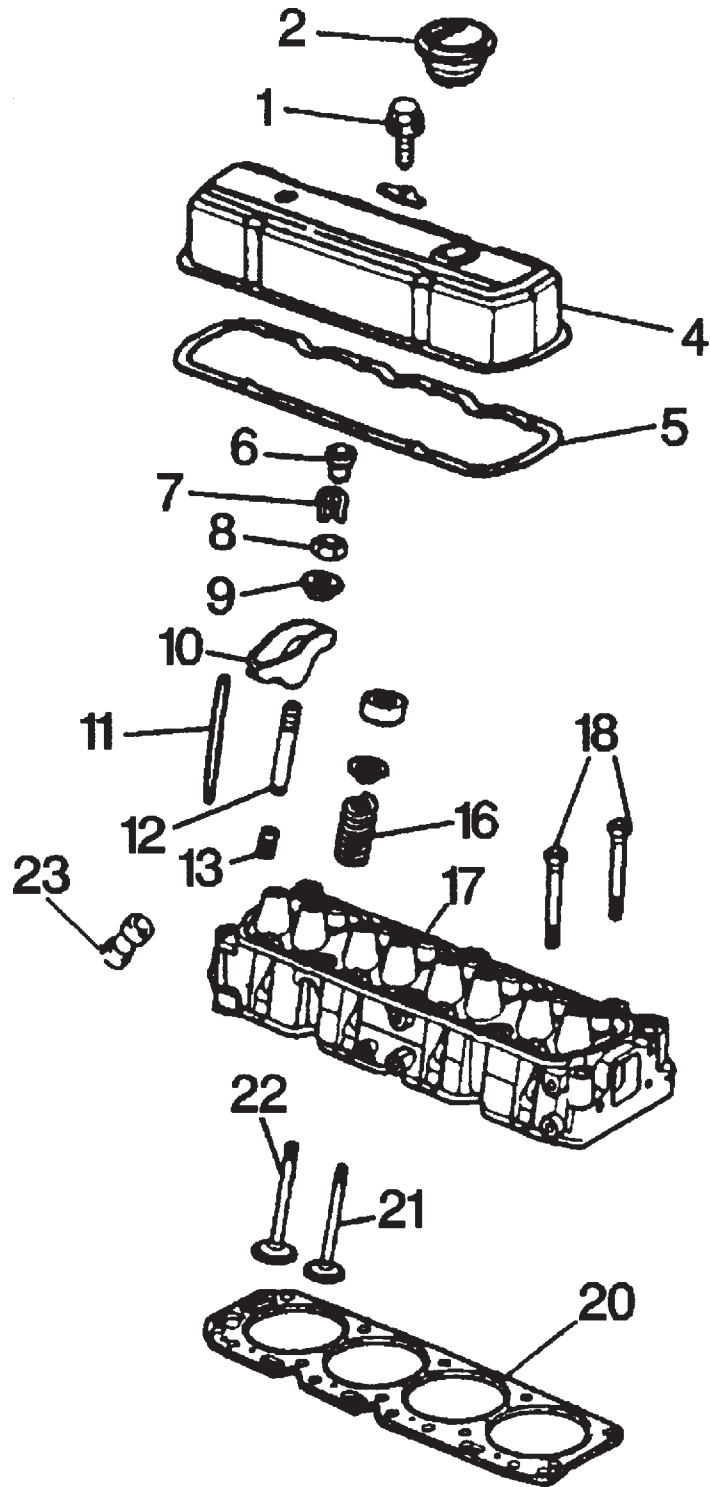
GENERAL MOTORS

BASE MOTOR 181 CID, 3.0L y 250 CID, 4.1L - Block engine 181 CID, 3.0L & 250 CID, 4.1L

Nº #	CANT. Qty.	DESCRIPCIÓN Description	REFERENCIA Reference
2	4	PISTON: 181 RX 3.0L	REC10001
2	4	PISTON: 181 RX 3.0L 0.20	REC10016
2	4	PISTON: 181 3.0LX STD	RM733-810852
2	6	PISTON: 4.1L STD	REC10002
2	6	PISTON: 4.1L 0.30	REC10003
3	4	RING SET: PISTON 181 3.0L	REC11007
3	4	RING SET: PISTON 181 3.0L 0.20	REC11008
3	4	RING SET: PISTON 181 3.0LX	REC11001
3	6	RING SET: PISTON 4.1L STD	REC11002
3	6	RING SET: PISTON 4.1L 0.30	REC11003
4	4	CONNECTING ROD: 181	MP0014-036
6	4	BEARING: CONNECTING ROD 3.0L & LXSTD	REC13001
6	4	BEARING: CONNECTING ROD 3.0L & LX 0.10	REC13002
6	4	BEARING: CONNECTING ROD 3.0L & LX 0.20	REC13024
6	4	BEARING: CONNECTING ROD 3.0LX & GS	RM23-804982 (Ancho 19mm Width)
6	4	BEARING: CONNECTING ROD 4.1L STD	REC13003
6	4	BEARING: CONNECTING ROD 4.1L 0.10	REC13004
15	1	GEAR: CAMSHAFT 54 DIENTES (54 Teeth)	REC15001
18	1	BEARING: CAMSHAFT (Set of 4)	REC13005
19	1	CAMSHAFT: 181 RX	REC16001
23	1	BEARING KIT: CRANKSHAFT 3.0L STD	REC13006
23	1	BEARING KIT: CRANKSHAFT 3.0L 0.10	REC13007
23	1	BEARING KIT: CRANKSHAFT 3.0L 0.20	REC13026
23	1	BEARING KIT: CRANKSHAFT 4.1L STD	REC13008
23	1	BEARING KIT: CRANKSHAFT 4.1L 0.10	REC13009
25	1	SEAL: CRANK FRONT OIL	REC74241
26	1	GEAR: CRANKSHAFT 181 RX	REC15003 27 Dientes (27 Teeth)
27	1	GASKET: CRANK COVER	GLM30360
28	1	COVER: TIMING 181	MP0014-058
30	1	BALANCER: HARMONIC 181	MP0025-004
40	1	GASKET: CRANKSHFT OIL SEAL HOUSING	GLM30354
43	1	SEAL: CRANKSHAFT RR OIL	GLM85790
44	4	BOLT: VALVE PUSH ROD COVER	MP0014-403
45	1	COVER: VALVE PUSH ROD	MP0014-401
46	1	GASKET: VALVE PUSH ROD COVER 181	FEL17903
46	1	GASKET: VALVE PUSH ROD COVER 4.1L	FEL17926
52	1	FLYWHEEL 12-3/4"	REC095009
53	1	GEAR RING 157 Teeth Ø 12"	REC157-N - Corona Dentada 157 dientes
53	1	GEAR RING 168 Teeth Ø 13-3/4"	REC1685 - Corona Dentada 168 dientes
53	1	GEAR RING 180 Teeth Ø 14-1/2"	FED416-124 - Corona Dentada 180 dientes
54	1	GASKET SET 2.5L / 3.0L (4L) (Excluded Intake Gasket)	FEL17200
54	1	GASKET SET 4.1L (6 In Line) (Excluded Intake Gasket)	FEL17219
55	1	INTAKE / EXHAUST GASKET 2.5L	FEL17300
55	1	INTAKE / EXHAUST GASKET 181	FEL17301
55	1	INTAKE / EXHAUST GASKET 3.0L	FEL17302
55	1	INTAKE / EXHAUST GASKET 3.0LX	FEL17304
55	1	INTAKE / EXHAUST GASKET 4.1L	FEL17319

GENERAL MOTORS

BASE MOTOR 181 CID, 3.0L y 250 CID, 4.1L - *Block engine 181 CID, 3.0L & 250 CID, 4.1L*



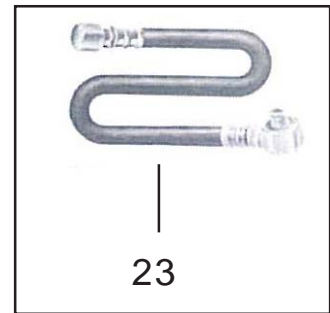
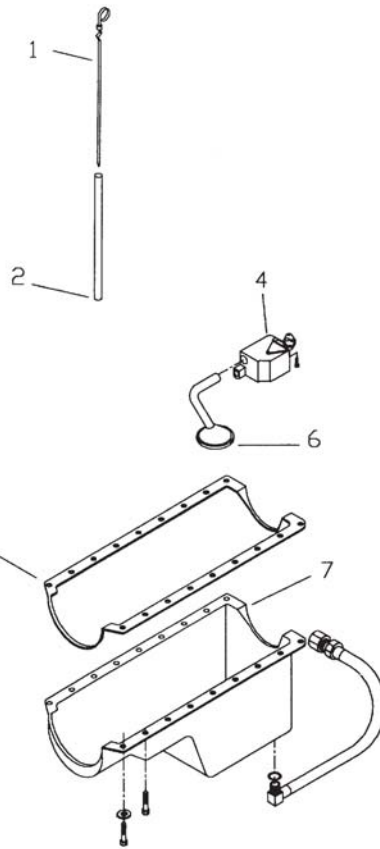
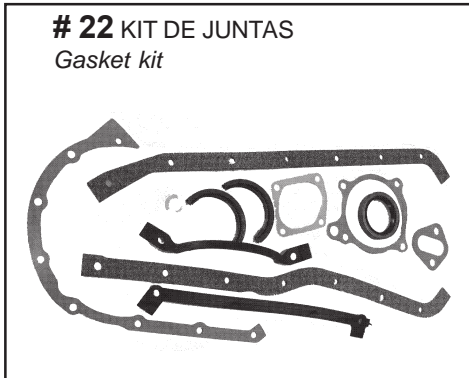
GENERAL MOTORS

BASE MOTOR 181 CID, 3.0L y 250 CID, 4.1L - *Block engine 181 CID, 3.0L & 250 CID, 4.1L*

Nº #	Cantidad Qty. needed	DESCRIPCIÓN Description	REFERENCIA Reference
1	5	BOLT: VALVE COVER	MP0025-107
2	1	CAP: OIL FILL	MP370700
4	1	VALVE COVER: 3.0L	MP0014-100
5	1	GASKET: VALVE COVER 3.0L	FEL17900
5	1	GASKET: VALVE COVER 4.1L	FEL17925
6	4	ROTATOR: VALVE 181	RM59340
7	8	KEY: VALVE STEM 3.0L	MP0007-380
8	8	NUT: VALVE ROCKER ARM 3.0L & 4.1L	MP0014-122
9	8	BALL: VALVE ROCKER ARM 3.0L & 4.1L	MP0014-121
10	8	ROCKER ARM: W/BALL 181 3.0L & 4.1L	REC10351
11	8	PUSH ROD: 3.0L & 4.1L	REC12001
12	8	STUD: ROCKER ARM BALL	MP0025-940
13	8	SEAL: VALVE STEM OIL 3.0L & 4.1L	SIE18-0518
16	8	SPRING: VALVE 3.0L & 4.1L	REC11501
17	1	REMANUFACTURED CYL. HEAD 3.0L 1975-90	FIRH6003
17	1	CYLINDER HEAD 3.0L (1990-04)	RM936-810840
17	1	REMANUFACTURED CYL. HEAD 3.0L 1990-04	FIRH6004
17	1	CYLINDER HEAD 3.0LX (1990-99)	RM936-810849
17	1	REMANUFACTURED CYL. HEAD 4.1L	FIRH6007
18	10	BOLT: CYLINDER HEAD	REC10501
20	1	GASKET: CYLINDER HEAD 181 RX	FEL17000
20	1	GASKET: CYLINDER HEAD 4.1L	FEL17019
21	4	VALVE: EXHAUST 4.1L (38-8,5-125,5)	REC13500
21	4	VALVE: EXHAUST 3.0L (40.7-8.7-125)	REC13501
21	4	VALVE: EXHAUST 2.5L (38.1-8.7-125)	REC13502
22	4	VALVE: INTAKE 4.1L (43.7-8.7-125)	REC13503
22	4	VALVE: INTAKE 3.0L (49.3-8.7-124)	REC13504
22	4	VALVE: INTAKE 2.5L (43.7-8.7-125)	REC13503
23	8	LIFTER: VALVE	REC14000

GENERAL MOTORS

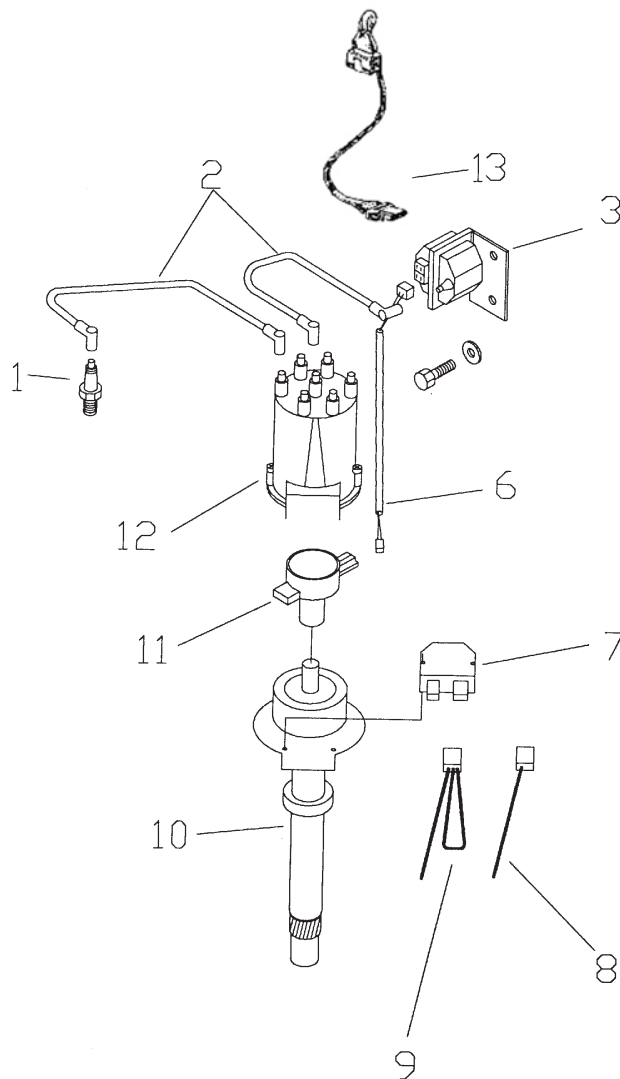
BASE MOTOR 181 CID, 3.0L y 250 CID, 4.1L - Block engine 181 CID, 3.0L & 250 CID, 4.1L



Nº	Cantidad Qty.needed	DESCRIPCIÓN Description	REFERENCIA Reference
1	1	DIPSTICK 181 OIL	MP0314-002
2	1	DIPSTICK TUBE 181 OIL	MP0314-001
4	1	PUMP: 181 RX OIL	REC14100
6	1	SCREEN: OIL PUMP	MP0007-256
7	1	OIL PAN 181 3.0L y 3.0 LX(1990-2005)	RM810845
12	1	GASKET OIL PAN 4 Pcs.	FEL17950
12	1	GASKET OIL PAN 3.0L - 1 Piece rear seal Retén trasero 1 pieza	FEL17952
12	1	GASKET OIL PAN 3.0L - 2 Pieces rear seal Retén trasero 2 piezas	FEL17951
12	1	GASKET OIL PAN 4.1L	FEL17975
13	1	FILTER OIL Ver marca de motor - See engine model	
22	1	GASKET SET 3.0L (4 oil pan gaskets 2 pcs.rear seal) (4 juntas cárter, retén trasero 2 piezas)	FEL17100
22	1	GASKET SET 3.0L (1 oil pan gasket 2 pcs.rear seal) (1 junta cárter, retén trasero 2 piezas)	FEL17101
22	1	GASKET SET 3.0L (1 oil pan gasket 1 pc. rear seal) (1 junta cárter, retén trasero 1 pieza)	FEL17102
22	1	GASKET SET 4.1L 24 bolt oil pan / Cárter 24 tornillos (16 bolt oil pan use sellant) (Cárter 16 tornillos utilizar sellante)	FEL17119
23	1	DRAIN HOSE MCM-OMC1/2"	MPI305-0380
23	1	DRAIN HOSE VOLVO 3/4"	MPI307-0380

GENERAL MOTORS

BASE MOTOR 181 CID, 3.0L - *Block engine 181 CID, 3.0L*

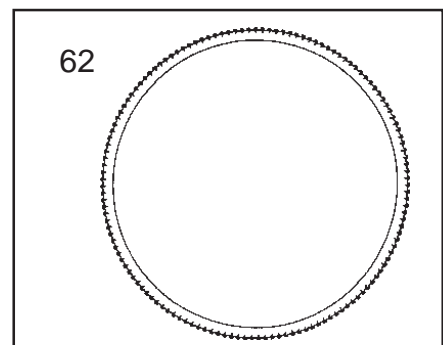
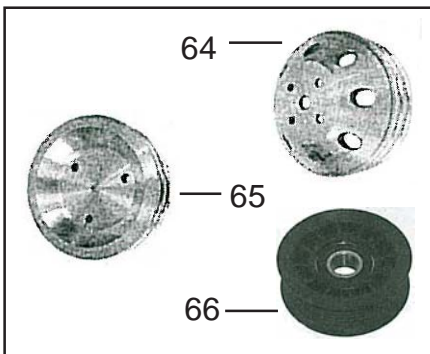
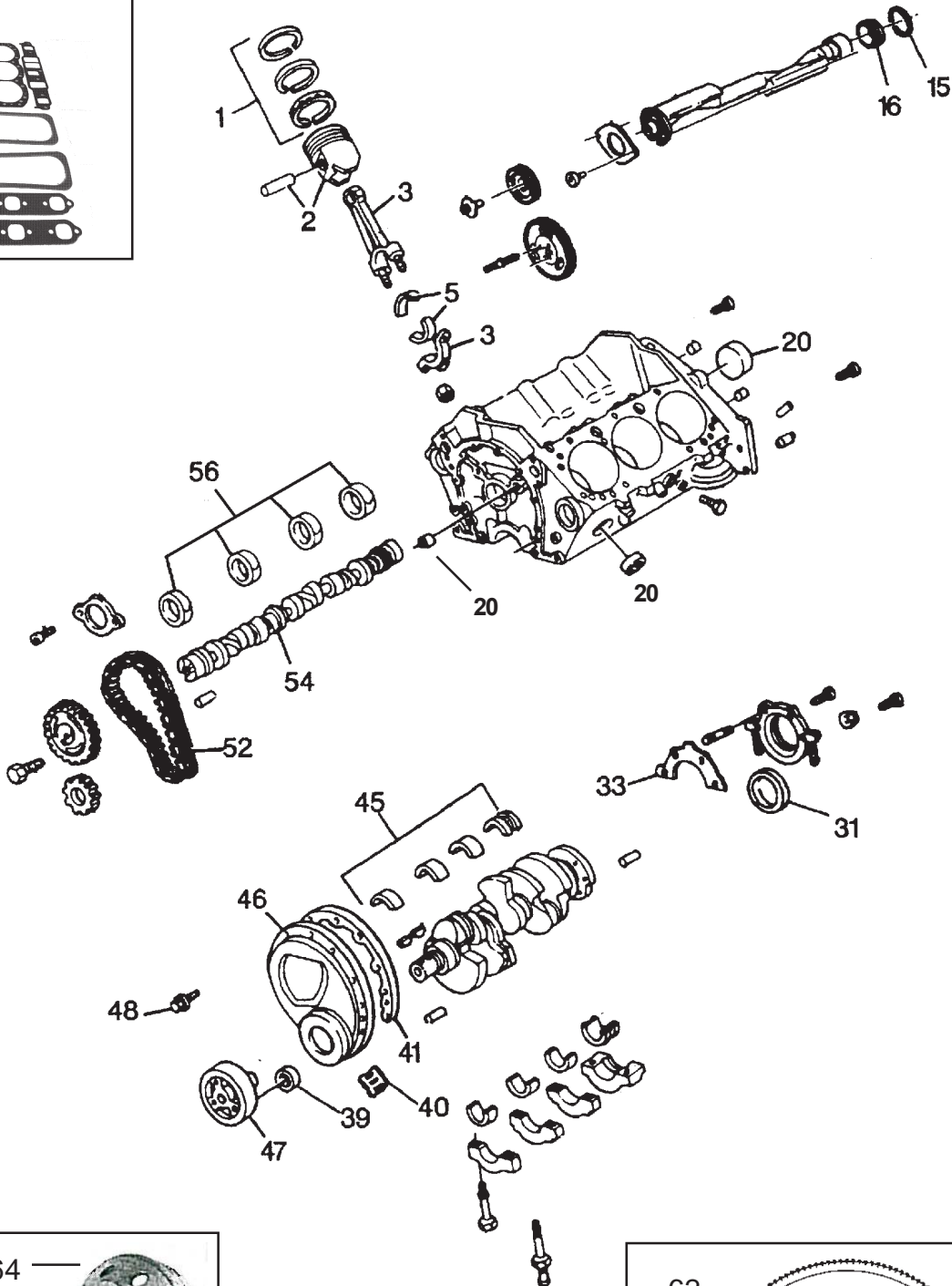
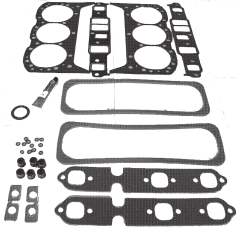


Nº #	CANTIDAD Qty. needed	DESCRIPCIÓN Description	REFERENCIA Reference
1	4	SPARK PLUG: 181	Ver marca de motor - <i>See engine model</i>
2	1	IGNITION WIRE SET: 181	Ver marca de motor - <i>See engine model</i>
3	1	COIL: DELCO	REC3854002
6	1	WIRE LEAD: COIL TO DIST.	MP500428
7	1	MODULE: DISTRIBUTOR DELCO	REC3854003
8	1	IGNITION WIRE: SHIFT INTERUPTER	MP500492
9	1	TIMING JUMPER: IGNITION	MP009159
10	1	DISTRIBUTOR: ELECTRONIC 181	MP480133
		Incluye 7, 11 & 12 <i>Included</i>	
11	1	ROTOR: DISTRIBUTOR 181 RX	REC3854261
12	1	CAP: DISTRIBUTOR 181 RX	REC3854260
13	1	WIRE LEAD: COIL HARNESS	MP500442

GENERAL MOTORS

BASE MOTOR 262 CID, V6, 4.3L - *Block engine 262 CID, V6, 4.3L*

63 KIT DE JUNTAS Gasket kit



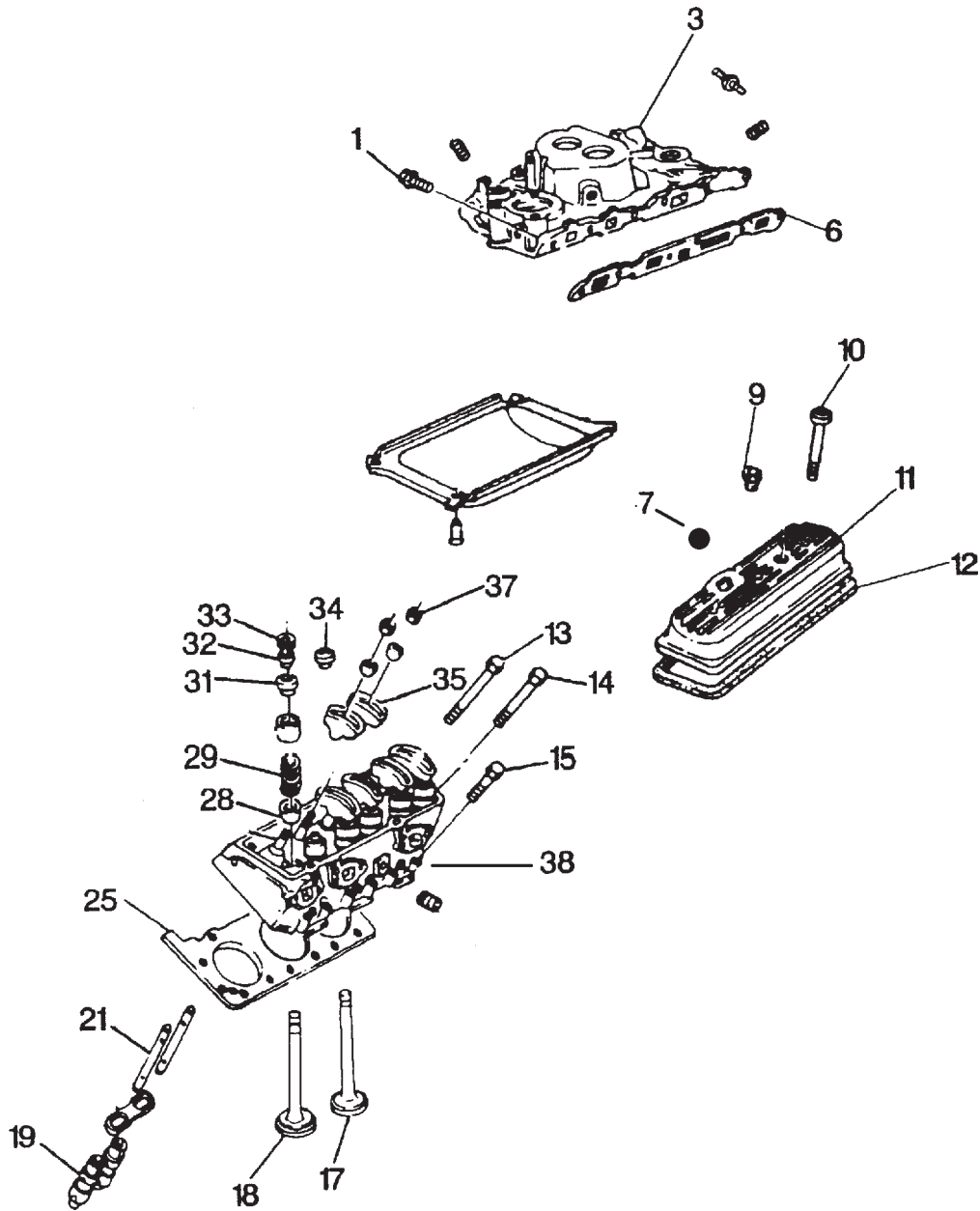
GENERAL MOTORS

BASE MOTOR 262 CID, V6, 4.3L - *Block engine 262 CID, V6, 4.3L*

Nº #	CANTIDAD Qty. needed	DESCRIPCIÓN - Description	REFERENCIA - Reference
1	6	RING SET: 262 Height 81 mm.	REC11001
1	6	RING SET: V6 AÑO 1996 & + STD	REC11004
1	6	RING SET: V6 AÑO 1996 & + 0.30	REC11016
1	6	RING SET: PISTON 262/350 Up to 1995 STD	REC11005
1	6	RING SET: PISTON 262 Up to 1995 0.30	REC11006
2	6	PISTON: 262/350 Up to 1995 STD	REC10004
2	6	PISTON: 262 Up to 1995 0.30	REC10005
2	6	PISTON: V6 AÑO 1996 & + STD	REC10006
2	6	PISTON: V6 AÑO 1996 & + 0.30	REC10013
3	6	CONNECTING ROD: 262	MP0009-036
5	6	BEARING: CONNECTING ROD 262	REC13010
5	6	BEARING: CONNECTING ROD 262 0.10	REC13011
15	1	PLUG: CAMSHAFT REAR	MP0009-208
16	1	BEARING: BALANCE SHAFT REAR	MP0009-091
20	1	BRASS EXPANSION PLUG KIT	MP0009-208
31	1	SEAL: CRANKSHAFT RR OIL	REC26-14240
31	1	SEAL: CRANKSHAFT RR OIL VORTEC	RM26-879194364
31	1	SEAL: CRANKSHAFT RR OIL VORTEC-MPI	RM26-8049090001
33	1	GASKET: CRANKSHAFT RR OIL SEAL HSG	GLM30354
39	1	SEAL: CRANKSHAFT FRONT OIL	REC74241
40	1	INDICATOR:TIMING OPPOSITE ROTATION	CRU30173
41	1	GASKET: ENGINE FRONT COVER	GLM30530
45	1	BEARING KIT: CRANKSHAFT	REC13012
45	1	BEARING KIT: CRANKSHAFT 0.10	REC13013
46	1	COVER: TIMING 262	REC15251
46	1	COVER: TIMING 4.3v 97> W/O SENSOR	REC15252
46	1	COVER: TIMING 4.3v 97> W SENSOR	REC15253
47	1	DAMPER: TORSIONAL 262	MP0009-004LC
48	1	KIT BOLTS: TIMING COVER	REC859021
52	1	CHAIN: TIMING 262 Up to / Hasta 1986	REC12502
52	1	CHAIN: TIMING 262 1987-1998	REC12501
52	1	CHAIN: TIMING 4.3L 1998 +	RM883494
54	1	CAMSHAFT: 262	REC10251
54	1	CAMSHAFT: 262 With Roller Cam Con Lifter de Rodillos	REC10252
56	1	BEARING KIT: CAMSHAFT	REC13014
62	1	GEAR RING 157 Teeth Ø 12"	REC157-N Corona dentada
62	1	GEAR RING 168 Teeth Ø 13-3/4"	REC1685 Corona dentada
62	1	GEAR RING 180 Teeth Ø 14-1/2"	FED416-124 Corona dentada
63	1	GASKET SET (except balanced shaft) (excepto motores eje equilibrado)	FEL17210
63	1	GASKET SET (Balanced shaft engines) (Motores eje equilibrado)	FEL17211
64	1	DUAL GROOVE PUMP PULLEY Ø 150 mm.	MP514516
65	1	DUAL GROOVE CRANK PULLEY	MP514693
66	1	SERPENTINE PULLEY MCM (Plastic)	SIE18-6457

GENERAL MOTORS

BASE MOTOR 262 CID, V6, 4.3L - *Block engine 262 CID, V6, 4.3L*



GLM32170
JUNTA COLECTOR
Manifold Gasket



FEL17410
KIT JUNTAS COLECTOR
Manifold Gasket Set



GENERAL MOTORS

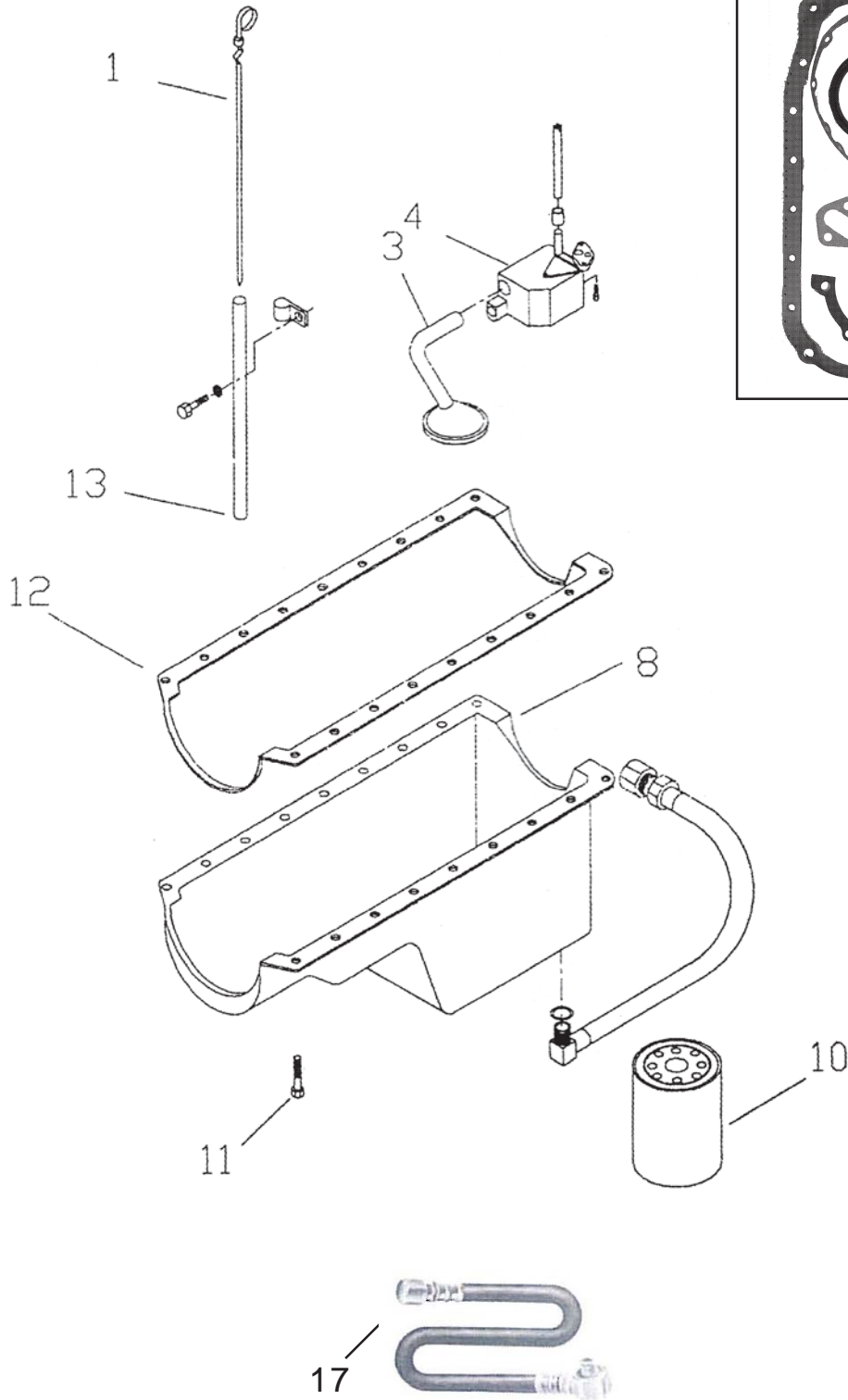
BASE MOTOR 262 CID, V6, 4.3L - *Block engine 262 CID, V6, 4.3L*

Nº #	CANTIDAD Qty. needed	DESCRIPCIÓN - Description	REFERENCIA - Reference
1	8	BOLT: INTAKE MANIFOLD	MP001204
3	1	INTAKE MANIFOLD PRE VORTEC 4BBL	MP425001
3	1	INTAKE MANIFOLD VORTEC 4BBL	MP425036
3	1	INTAKE MANIFOLD VORTEC 2BBL	MP425024
6	2	GASKET: INTAKE MANIFOLD	FEL17310
6	2	GASKET: INTAKE MANIFOLD VORTEC	MAL9-61214
7	2	CAP OIL FILL- TAPÓN	REC6532
9	2	GROMMET: VALVE COVER	RECTW9760
10	6	BOLT: VALVE COVER	MP0009-107
11	1	VALVE COVER VORTEC With Seal	MP0009-194LC (Con Tapón)
11	1	VALVE COVER VORTEC Without Seal	MP0009-195LC (Sin Tapón)
11	1	VALVE COVER PREVORTEC With Seal	RECTW6502T (Con Tapón)
11	1	VALVE COVER PREVORTEC Without Seal	RECTW6502 (Sin Tapón)
12	2	GASKET KIT: VALVE COVER PRE VORTEC	FEL17920
12	2	GASKET KIT: VALVE COVER VORTEC	FEL17921
13	10	BOLT: CYLINDER HEAD LONG	MP0007-027
14	4	BOLT: CYLINDER HEAD MEDIUM	MP0007-028
15	12	BOLT: CYLINDER HEAD SHORT	MP0007-029
17	6	VALVE: EXHAUST 262	REC13502 (38,2-8,8-125,2)
17	6	VALVE: EXHAUST 262 VORTEC 1993+	REC13505 (38-8,7-125)
18	6	VALVE: INTAKE 262	REC13506 (49-8,8-124)
18	6	VALVE: INTAKE 262 VORTEC 1993+	REC13507 (49,2-8,7-124)
19	12	LIFTER: VALVE 4.3 VORTEC 1996+	RM811844T
19	12	LIFTER: VALVE 262 DESDE 1987	REC14001
19	12	LIFTER: VALVE 262 HASTA 1986	REC14000
21	12	ROD: PUSH 262 HASTA 1986	REC12000
21	12	ROD: PUSH 262 DESDE 1986	REC12002
25	2	GASKET: CYLINDER HEAD	FEL17010
28	6	SEAL: INTAKE VALVE STEM	REC70817B
29	12	SPRING: VALVE 262/350	REC11500
31	12	SEAL: VALVE STEM OIL	SIE18-0518
32	6	ROTATOR: VALVE	RM59340
33	12	KEY: VALVE STEM	MP0007-380
34	6	CAP: INTAKE VALVE SPRING	MP0007-378
35	12	ARM: ROCKER	REC10352
37	12	NUT: ROCKER ARM	MP0007-122
38	2	CYLINDER HEAD	See First Mate Cylinder Heads Ver Culatas First Mate

GENERAL MOTORS

BASE MOTOR 262 CID, V6, 4.3L - *Block engine 262 CID, V6, 4.3L*

16 KIT DE JUNTAS
Gasket set



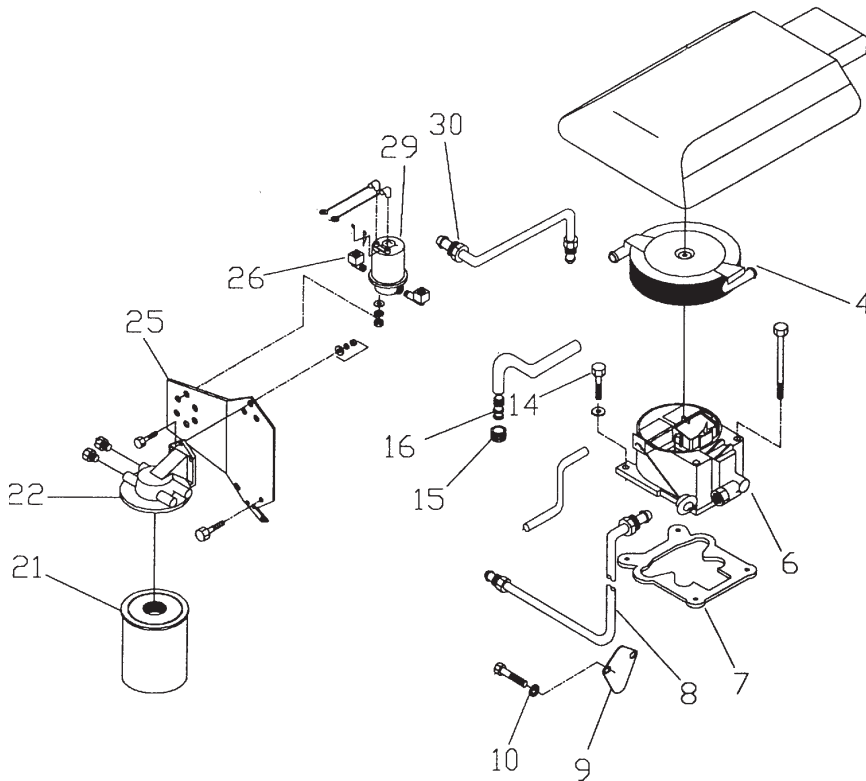
GENERAL MOTORS

BASE MOTOR 262 CID, V6, 4.3L - *Block engine 262 CID, V6, 4.3L*

Nº #	CANTIDAD <i>Qty. needed</i>	DESCRIPCIÓN <i>Description</i>	REFERENCIA <i>Reference</i>
1	1	DIPSTICK 262/350	REC551455
3	1	TUBE & SCREEN: OIL PUMP	MP0007-256
4	1	PUMP: OIL PRE VORTEC	REC14101
4	1	PUMP: OIL VORTEC	RM809907002
8	1	OIL PAN: 262	REC15351
8	1	OIL PAN ALUMINUM GM BLOCK: 8LK, 8LJ	RM809980T1
8	1	OIL PAN ALUMINUM GM BLOCK: 9LK,9LJ,0LJ	RM804912T01
10	1	FILTER: OIL 262	<i>See Filters per engine's brand</i> <i>Ver Filtros por marcas motores</i>
11	18	BOLT: OIL PAN	RECPNRS-1100
12	1	GASKET: OIL PAN 4 PCS.	FEL17970
12	1	GASKET: OIL PAN 1 PC.	FEL17971
12	1	GASKET: OIL PAN 262 VORTEC 1 PC.	RM27-142471
13	1	DIPSTICK TUBE: 262	MP0307-002
13	1	DIPSTICK TUBE: 4.3V +1999	MP0009-002N5
16	1	GASKET SET (4 Oil pan gaskets & 2 pcs rear seal) (4 juntas cárter, retén trasero 2 piezas)	FEL17110
16	1	GASKET SET (1 Oil pan gasket & 1 pcs rear seal, excluded balanced shaft) (1 junta cárter, retén trasero 1 pieza, excepto eje equilibrado)	FEL17115
16	1	GASKET SET (1 Oil pan gasket & 1 pcs rear seal, with balanced shaft) (1 junta cárter, retén trasero 1 pieza, con eje equilibrado)	FEL17116
17	1	DRAIN HOSE MCM-OMC1/2"	MPI305-0380
17	1	DRAIN HOSE VOLVO 3/4"	MPI307-0380
17	1	DRAIN HOSE Metric FORD 14mm	MPI309-0380

GENERAL MOTORS

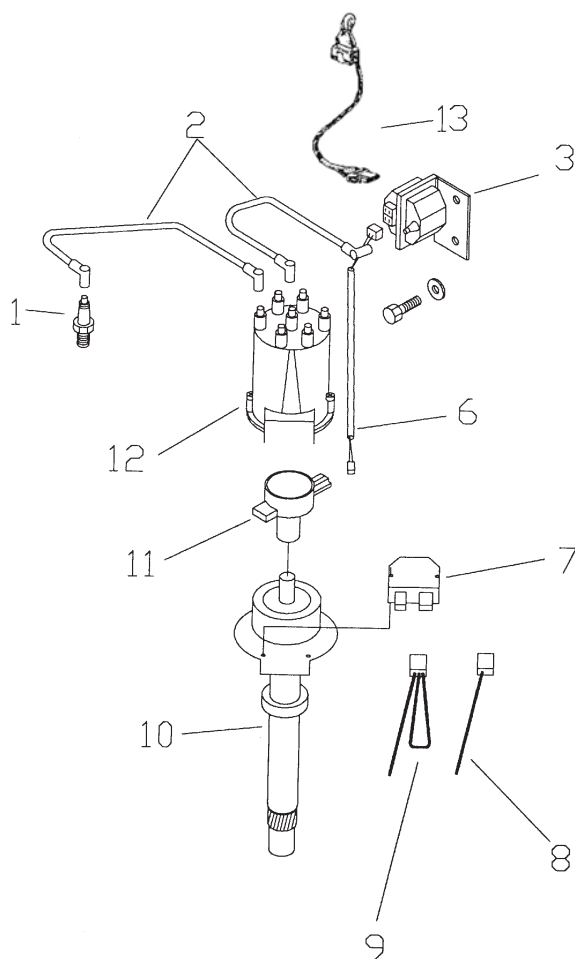
BASE MOTOR 262 CID, V6, 4.3L - *Block engine 262 CID, V6, 4.3L*



Nº #	CANTIDAD Qty. needed	DESCRIPCIÓN - Description	REFERENCIA - Reference
4	1	FLAME ARRESTOR 262/350 STD	REC525007
6	1	CARBURETOR REMANUFACTURED	<i>See guide per engine brand</i> Ver guía según marca motores
6	1	NEW CARBURETOR 262 HOLLEY 2 BBL	MP426422
6	1	NEW CARBURETOR 262 HOLLEY 4 BBL	MP426434
7	1	GASKET CARBURETOR	<i>See guide per engine brand</i> Ver guía según marca motores
8	1	FUEL LINE FUEL PUMP to CARB	MP429905
9	1	PLATE BLOCK-OFF (MECH FUEL PUMP)	MP0309-021
10	2	WASHER LOCK 3/8"	MPWOL0-006
15	2	GROMMET VALVE COVER	MP806200
16	2	FITTING VENT HOSE	MP231263
21	1	FUELFILTER / WATER SEPARATOR	<i>See Fuel filters per engine brand</i> Ver Filtros comb. por marcas motores
22	1	BASE FILTER FUEL / WATER SEPARATOR	GLM25000
25	1	BRACKET FILTER / WATER SEPARATOR	MP0436-055F3
26	1	FITTING FUEL PUMP OUT V6 V8	MP222048
29	1	FUEL PUMPS	<i>See Pumps per engine brand</i> Ver Bombas por marcas motores
30	1	FUEL LINE: SEP-PUMP PORT	MP429415

GENERAL MOTORS

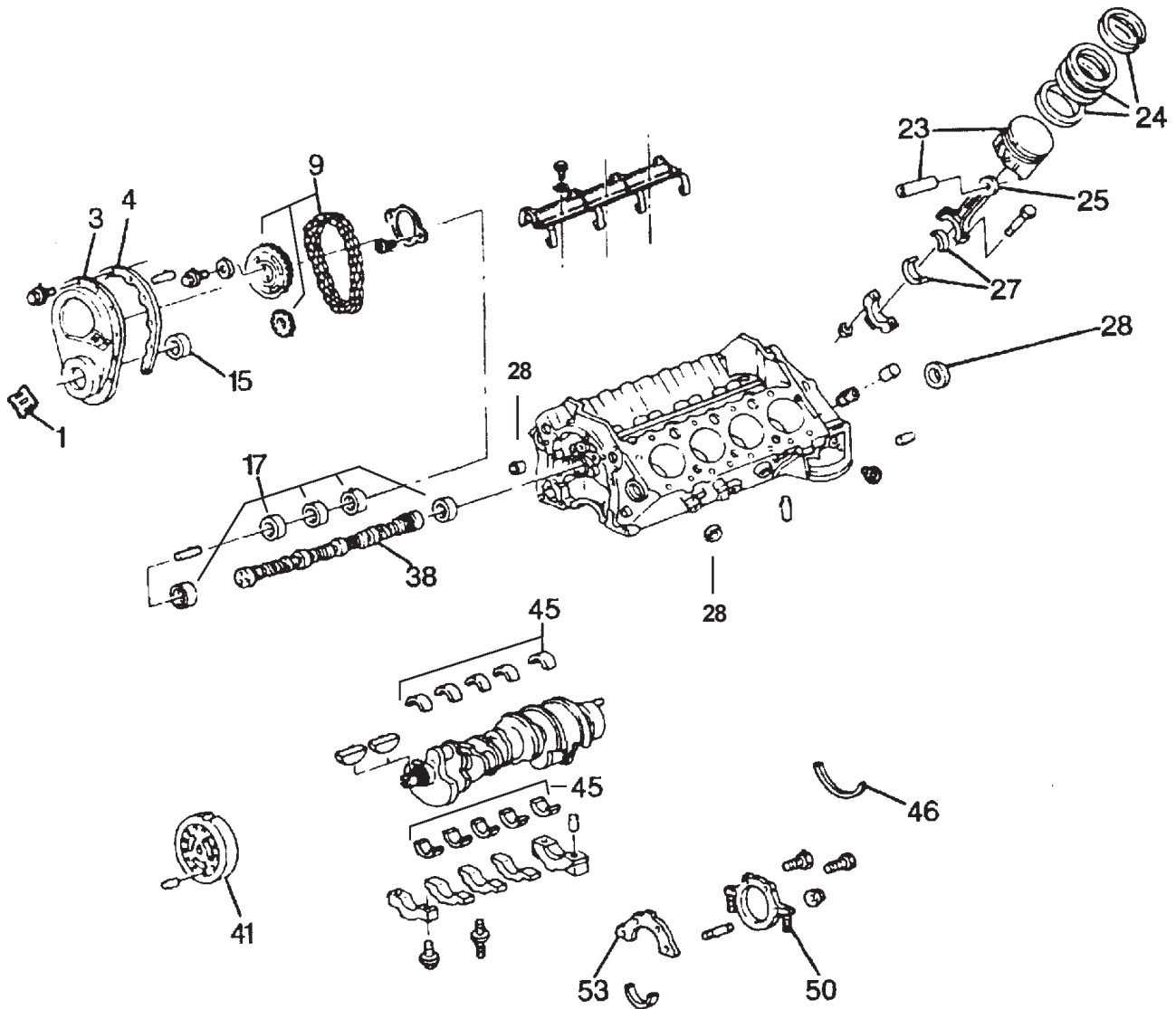
BASE MOTOR 262 CID, V6, 4.3L - *Block engine 262 CID, V6, 4.3L*



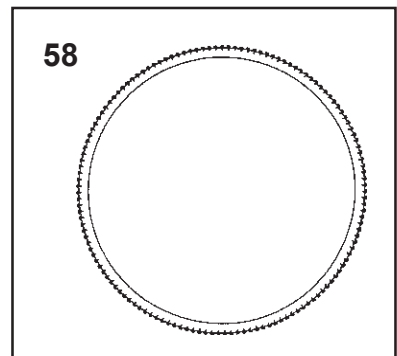
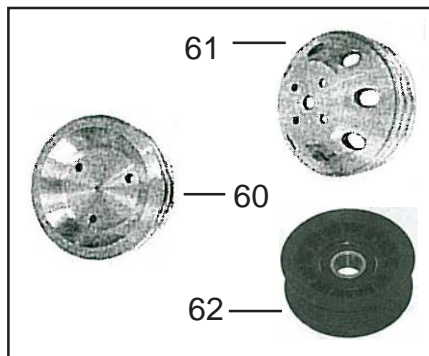
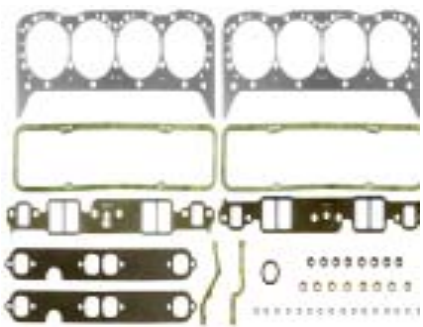
Nº #	CANTIDAD <i>Qty. needed</i>	DESCRIPCIÓN <i>Description</i>	REFERENCIA <i>Reference</i>
1	6	SPARK PLUGS	See engine model / Ver marca de motor
2	7	IGNITION WIRE: SET V6	See engine table / Ver tabla según motor
3	1	COIL: DELCO E.I.	REC3854002
6	1	WIRE LEAD: COIL to DIST.	MP500428
7	1	MODULE: DELCO DIST	REC3854003
8	1	IGNITION WIRE: SHIFT INTERRUPTER	MP500492
9	1	TOOL: TIMING	MP009159
10	1	DISTRIBUTOR: 262 <i>Incluye 7, 11 & 12 Included</i>	MP480140
11	1	ROTOR: V6 DIST	REC3854311
12	1	CAP: V6 DIST	REC3854331
13	1	WIRE LEAD: COIL HARNESS	MP500442

GENERAL MOTORS

BASE MOTOR V8, BLOQUE PEQUEÑO, 5.0 & 5.7L - Block engine V8 Small block



59 KIT DE JUNTAS Gasket set



GENERAL MOTORS

BASE MOTOR V8, BLOQUE PEQUEÑO, 5.0 & 5.7L - Block engine V8 Small block

Nº #	CANTIDAD Qty. needed	DESCRIPCIÓN Description	REFERENCIA Reference	
1	1	INDICATOR TIMING	MP0011-045	
3	1	COVER TIMING SB NR	REC15251	
3	1	COVER TIMING (PLÁSTICO) Since 1996	MP804007	Sin - W/O Sensor
3	1	COVER TIMING (PLÁSTICO) Since 1996	REC15254	Con - With Sensor
4	1	GASKET TIMING COVER	GLM30530	
9	1	CHAIN TIMING 305, 350 87>	REC12503	
9	1	CHAIN TIMING Since 1996	MP0017-082	
15	1	SEAL FRONT CAMSHAFT SB NR	REC74241	
15	1	SEAL FRONT CAMSHAFT SB OR	FEL17760	
17	2	BEARING CAMSHAFT	REC13014	
23	8	PISTON 5.0L STD. 1998+	RM735-802557T	
23	8	PISTON 5.0L STD 1987-1997	REC10007	
23	8	PISTON 5.0L 0.20 1987-1997	REC10015	
23	8	PISTON 5.0L 0.30 1987-1997	REC10008	
23	8	PISTON 5.0L Up to / Hasta 1987	REC10009	
23	8	PISTON 5.0L 0.30 Up to / Hasta 1987	REC10010	
23	8	PISTON 5.7L 1996+	REC10006	
23	8	PISTON 5.7L 1996+ 0.30	REC10013	
23	8	PISTON 5.7L STD Up to / Hasta 1995	REC10004	
23	8	PISTON 5.7L 0.30 Up to / Hasta 1995	REC10005	
24	8	RING SET 5.0L STD 1998+	RM39-802559	
24	8	RING SET 5.0L STD 1976-1997	REC11009	
24	8	RING SET 5.0L 0.20 1976-1997	REC11020	
24	8	RING SET 5.0L 0.30 1976-1997	REC11010	
24	8	RING SET 5.7L STD 1996+	REC11004	
24	8	RING SET 5.7L STD 1996+ 0.30	REC11016	
24	8	RING SET 5.7L STD Height / Altura 71mm	REC11005	
24	8	RING SET 5.7L 030 Height / Altura 71mm	REC11006	
24	8	RING SET 5.7L 040 Height / Altura 71mm	REC11011	
24	8	RING SET 5.7L STD Height / Altura 81mm	REC11001	
25	8	CONNECTING ROD: 350	MP0007-036	
27	1	BEARING KIT: CONN ROD 5.0 & 5.7	REC13001	
27	1	BEARING KIT: CONN ROD 0.10 5.0 & 5.7	REC13002	
27	1	BEARING KIT: CONN ROD 0.20 5.0 & 5.7	REC13024	
28	1	BRASS EXPANSION PLUG KIT	MP0009-208	
38	1	CAMSHAFT: 350 NR	REC10253	
41	1	DAMPER: TORSIONAL 5.0L	MP0009-004LC	
41	1	DAMPER: TORSIONAL 5.7L	MP0009-004	
45	1	BEARING KIT: CRANKSHAFT NR	REC13012	
45	1	BEARING KIT: CRANKSHAFT NR Since 1996	REC13015	
45	1	BEARING KIT: CRANKSHAFT NR 0.10	REC13013	
45	1	BEARING KIT: CRANKSHAFT NR 0.20	REC13025	
45	1	BEARING KIT: CRANKSHAFT NR 0.10 Since 1996	REC13016	
46	1	SEAL: CRANKSHAFT RR SB 1996+	REC26-14240	
46	1	SEAL: CRANKSHAFT RR SB 2 pcs.	FELBS40013	
46	1	SEAL: CRANKSHAFT OR 2 pcs.	MAL9-61628	
46	1	SEAL: CRANKSHAFT OR 1 pcs.	FEL17725	
50	2	STUD: CRANKSHAFT OIL SEAL	RECPNRS-1100	
53	1	GASKET: CRANKSHAFT RR	GLM30354	
58	1	GEAR RING 157 Teeth Ø 12"	REC157-N	Corona dentada
58	1	GEAR RING 168 Teeth Ø 13-3/4"	REC1685	Corona dentada
58	1	GEAR RING 180 Teeth Ø 14-1/2"	FED416-124	Corona dentada
59	1	GASKET KIT 5.0L With valve cover holes in perimeter (Con tapa de válvulas con agujeros en perímetro)	FEL17220	
59	1	GASKET KIT 5.0L With valve cover holes in center (Con tapa de válvulas con agujeros en el centro)	FEL17224	
59	1	GASKET KIT 5.7L With valve cover holes in perimeter (Con tapa de válvulas con agujeros en perímetro)	FEL17230	
59	1	GASKET KIT 5.0L With valve cover holes in center (Con tapa de válvulas con agujeros en el centro)	FEL17214	
59	1	GASKET SET 5.7L GENE+ VORTEC	FEL17232	
60	1	DUAL GROOVE PUMP PULLEY Ø 150 mm.	MP514516	
61	1	DUAL GROOVE CRANK PULLEY	MP514693	
62	1	SERPENTINE PULLEY MCM (Plastic)	SIE18-6457	

GENERAL MOTORS

BASE MOTOR V8, BLOQUE PEQUEÑO, 5.0 & 5.7L - Block engine V8 Small block

FEL17420

KIT JUNTAS COLECTOR

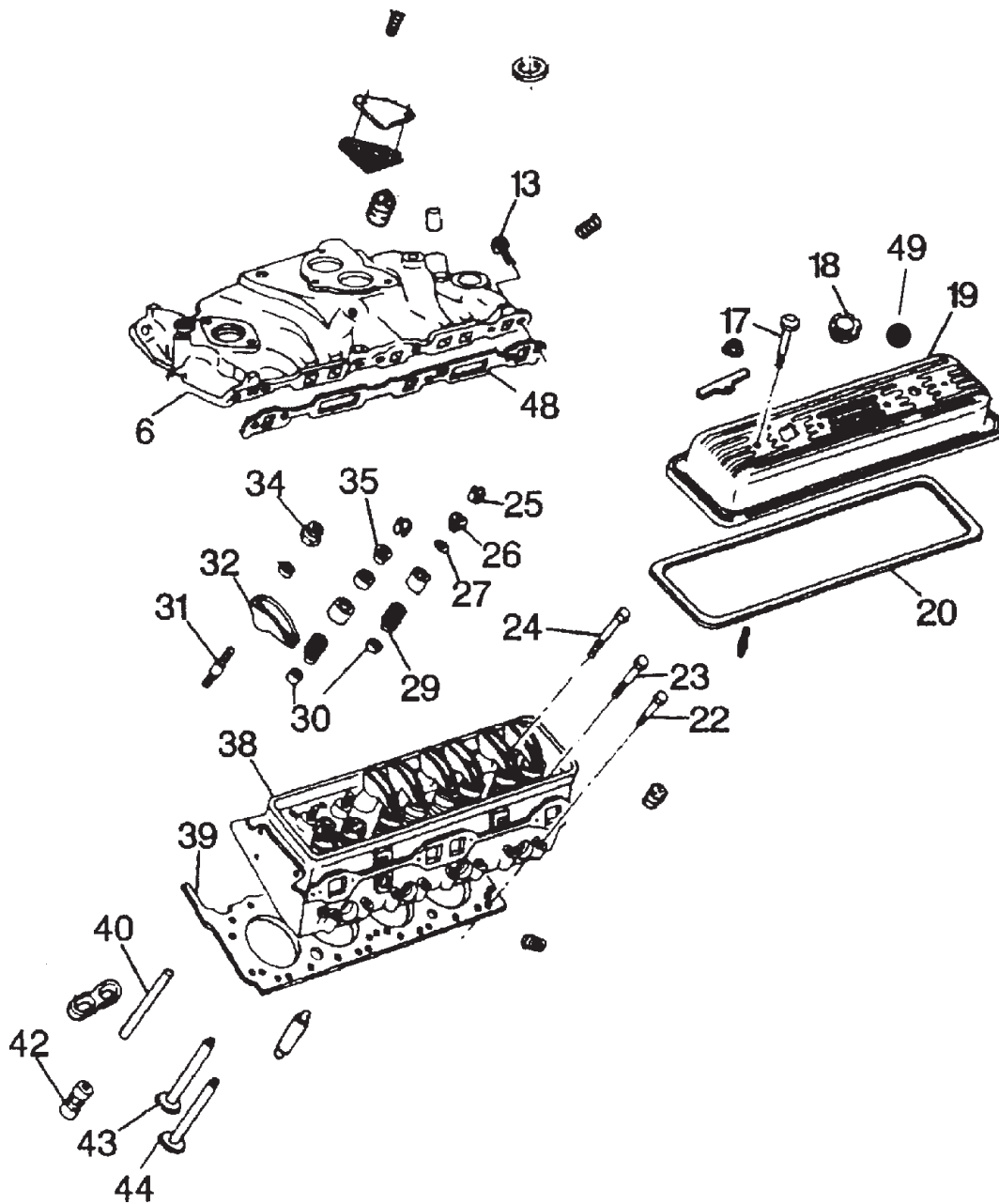
Manifold gasket Set



REC27-33395

JUNTA COLECTOR

Manifold gasket



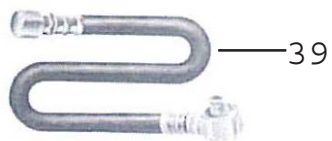
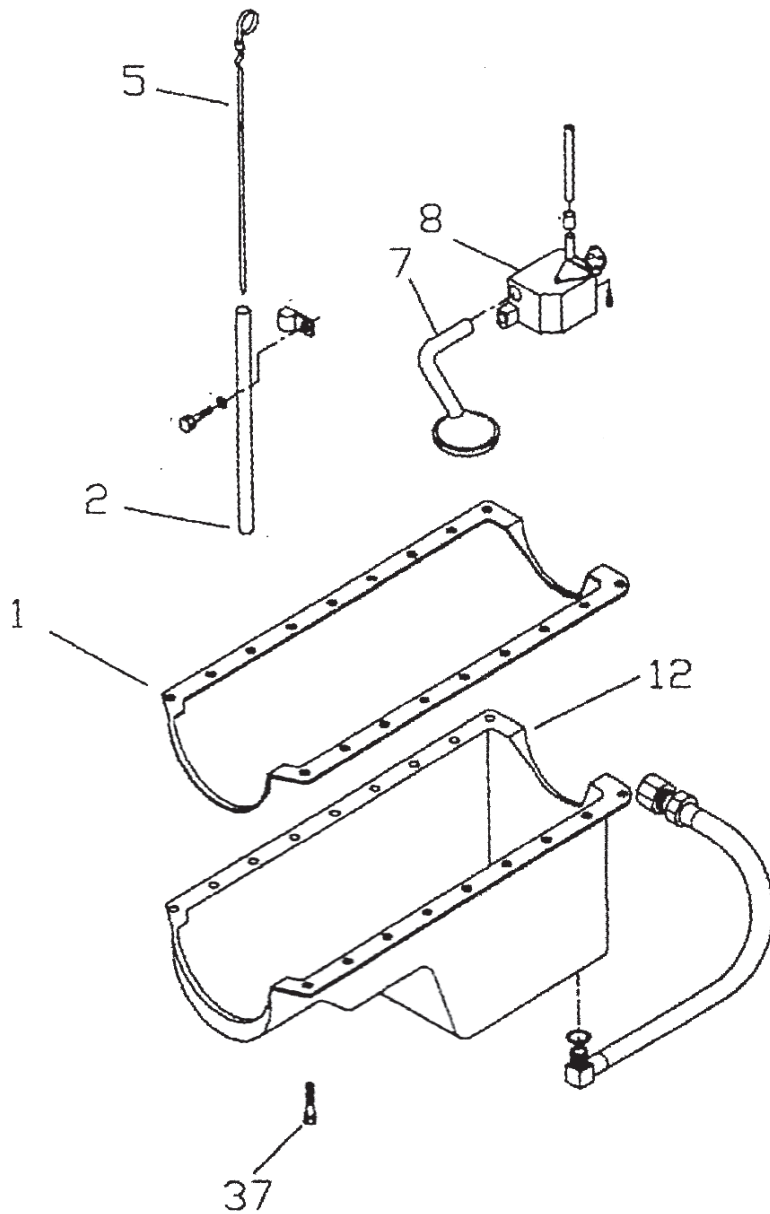
GENERAL MOTORS

BASE MOTOR V8, BLOQUE PEQUEÑO, 5.0 & 5.7L - *Block engine V8 Small block*

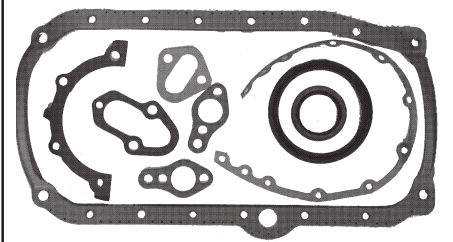
Nº #	CANTIDAD Qty. needed	DESCRIPCIÓN Description	REFERENCIA Reference
6	1	MANIFOLD: INTAKE 5.7 VORTEC	REC425062
13	8	BOLT INTAKE MANIFOLD	MP001204
17	8	BOLT: VALVE COVER SB	MP0009-107
18	1	CAP: OIL FILL 1986 & +	REC6532
18	1	CAP: OIL FILL 1978-1985	REC4804
19	1	VALVE COVER: 5.0 & 5.7L 1987-88 Bolt around perimeter - Agujeros laterales	REC14200
19	1	VALVE COVER: 5.0 & 5.7L 1987 & - Bolt around perimeter - Agujeros laterales	REC14201
19	1	VALVE COVER: 5.0 & 5.7L 1989+ 1 Seal - 1 Tapón	REC14202
19	1	VALVE COVER: 5.0 & 5.7L 1989+ 2 Seals - 2 Tapones	REC14203
20	1	GASKET VALVE COVER 5.0 & 5.7L Up to 1986 Bolt around perimeter - Agujeros laterales	FEL17930
20	1	GASKET VALVE COVER 5.0 & 5.7L Since 1987 Central Bolts - Agujeros centrales	FEL17931
22	16	BOLT: CYLINDER HEAD SHORT	MP0007-029
23	4	BOLT: CYLINDER HEAD MED	MP0007-028
24	14	BOLT: CYLINDER HEAD LONG	MP0007-027
25	16	KEY: VALVE STEM 350	MP0007-380
26	8	CAP: INLET VALVE SPRING	MP0007-378
27	16	SEAL: VALVE STEM OIL	SIE18-0518
29	16	SPRING: VALVE	REC11500
29	16	SPRING: VALVE Since 1996	RM24-48347 1
30	8	SEAL: INTAKE VALVE STEM	SIE18-0518
31	16	STUD: VALVE ROCKER ARM BALL	MP0025-940
32	16	ROCKER ARM: VALVE	REC10352
34	16	NUT: VALVE ROCKER ARM	MP0007-122
35	8	ROTATOR: VALVE EXHAUST	RM59340
38	2	HEAD: CYLINDER	See First Mate Cylinder Heads Ver Culatas First Mate
39	2	GASKET: CYLINDER HEAD 5.0L	FEL17020
39	2	GASKET: CYLINDER HEAD 5.7L	FEL17030
40	16	PUSH ROD: VALVE 1987-1995 5.0 & 5.7	REC12003
40	16	PUSH ROD: VALVE Since 1996 5.0 & 5.7	REC12004
40	16	PUSH ROD: VALVE Up to 1986 5.0 & 5.7L	REC12000
42	16	LIFTER: VALVE	REC14002
42	16	LIFTER: VALVE 1996+ 5.0 & 5.7	MP0017-097
43	8	VALVE: EXHAUST 5.0L (38 - 8,7 - 126)	REC13502 (2 slot - ranuras)
43	8	VALVE: EXHAUST 5.0L & 5.7L (38 - 9,4 - 125)	REC13508 (2 slot - ranuras)
43	8	VALVE: EXHAUST 5.0L & 5.7L (38 - 8,7 - 125)	REC13500 (2 slot - ranuras)
43	8	VALVE: EXHAUST 5.0L & 5.7L VORTEC 1996+(38-8,7-125)	REC13505 (1 slot - ranura)
44	8	VALVE: INTAKE 5.0L (47 - 8,8 - 125)	REC13509 (2 slot - ranuras)
44	8	VALVE: INTAKE 5.7L (49 - 8,8 - 124)	REC13510 (2 slot - ranuras)
44	8	VALVE: INTAKE 5.7L VORTEC 1996+ (49 - 8,8 - 124)	REC13507 (1 slot - ranura)
44	8	VALVE: INTAKE 5.0L VORTEC 1996+ (46,5 - 8,7 - 124)	RM802555 (1 slot - ranura)
48	2	GASKET KIT: INTAKE MANIFOLD PREVORTEC	FEL17320
48	2	GASKET KIT: INTAKE MANIFOLD VORTEC	SIE18-0488
49	2	GROMMETT: VALVE COVER 5.0 & 5.7L 1986+	REC6507
49	2	GROMMETT: VALVE COVER 5.0 & 5.7L 1978 a 1985	RECTW9760

GENERAL MOTORS

BASE MOTOR V8, BLOQUE PEQUEÑO, 5.0 & 5.7L - *Block engine V8 Small block*



38 KIT DE JUNTAS
Gasket set



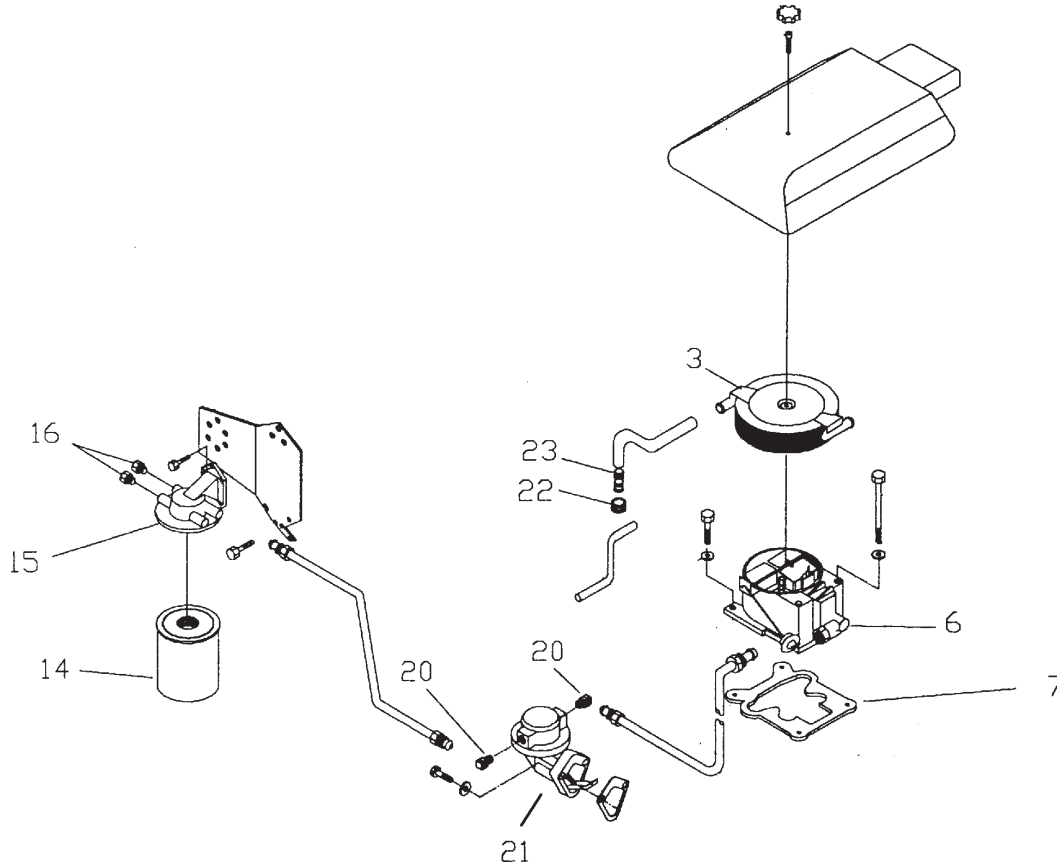
GENERAL MOTORS

BASE MOTOR V8, BLOQUE PEQUEÑO, 5.0 & 5.7L - *Block engine V8 Small block*

Nº #	CANTIDAD Qty. needed	DESCRIPCIÓN - <i>Description</i>	REFERENCIA - <i>Reference</i>
1	1	GASKET OIL PAN (4 gaskets port dipstick) (4 juntas varilla aceite babor)	FEL17980
1	1	GASKET OIL PAN (4 gaskets stbd. dipstick) (4 juntas varilla aceite estribor)	FEL17981
1	1	GASKET OIL PAN (1 gasket + 1 piece rear seal) (1 junta + retén trasero 1 pieza)	FEL17982
1	1	GASKET OIL PAN (1 gasket + 2 pieces rear seal) (1 junta + retén trasero 2 piezas)	FEL17983
2	1	DIPSTICK TUBE 5.0L, 5.7L	MP0307-002
2	1	DIPSTICK TUBE PLASTISOLPAN SB	MP373201
5	1	DIPSTICK 5.0L, 5.7L	REC551455
5	1	DIPSTICK 5.7V 1999+	MP371663
7	1	SCREEN OIL 350 (W/TUBE)	MP0007-256
8	1	PUMP OIL 350	REC14101
12	1	OIL PAN 350 <86	REC15352
12	1	OIL PAN 350 87>	REC15353
37	1	BOLTS KIT	RECPNRS-1100
38	1	GASKET SET (4 oil pan gaskets 2 pieces rear seal) (4 juntas cárter 2 piezas retén)	FEL17120
38	1	GASKET SET (1 oil pan gasket 1 piece rear seal) (1 junta cárter 1 pieza retén)	FEL17125
38	1	GASKET SET (1 oil pan gasket, 1 seal plastic dist.cap) (1 junta cárter, 1 retén tapa distribución plástico)	FEL17124
39	1	DRAIN HOSE MCM-OMC 1/2"	MPI305-0380
39	1	DRAIN HOSE VOLVO 3/4"	MPI307-0380
39	1	DRAIN HOSE Metric FORD 14mm	MPI309-0380

GENERAL MOTORS

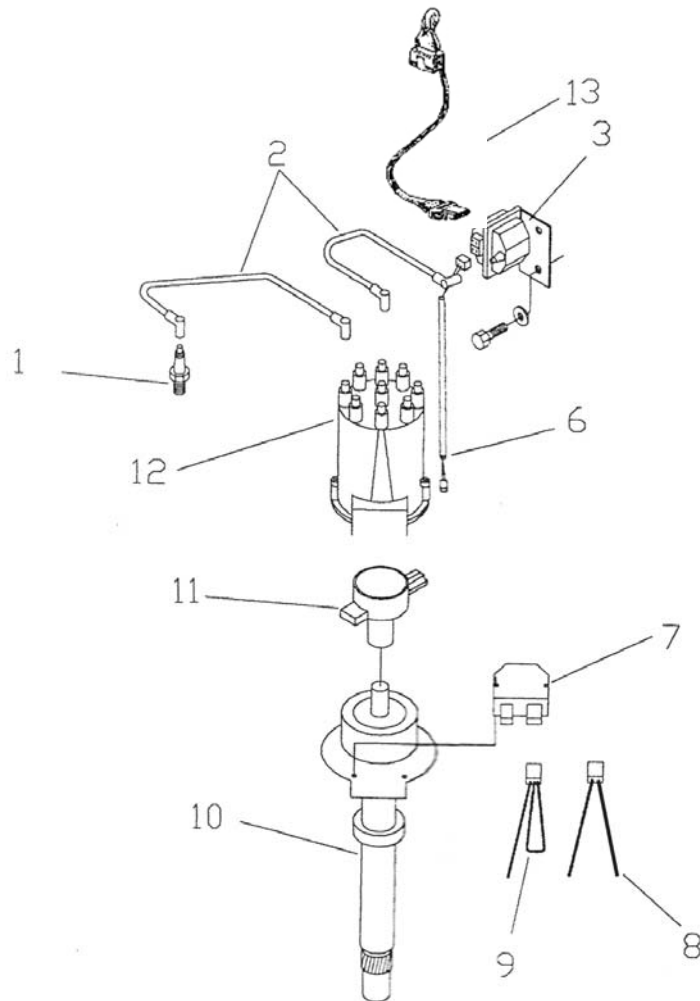
BASE MOTOR V8, BLOQUE PEQUEÑO, 5.0 & 5.7L - Block engine 350, V8 Small block



Nº #	CANTIDAD Qty. needed	DESCRIPCIÓN - Description	REFERENCIA - Reference
3	1	FLAME ARRESTOR: 350	REC525007
6	1	CARBURETOR Remanufactured	See engine guide Ver marca y modelo motor
6	1	NEW CARBURATOR 5.7 Holley 4 BBL	MP426574
7	1	GASKET: CARBURETOR	See carburetor guide Ver guia según marca carburador
14	1	FILTER: FUEL/WATER SEP.	See engine guide Ver marca y modelo motor
15	2	BRACKET	GLM25000
16	1	FITTING: FUEL PUMP OUT V6 V8	MP222048
20	1	FITTING: FUEL PUMP OUT V6 V8	MP222048
21	1	FUEL PUMP	See engine guide Ver marca y modelo motor
22	1	GROMMET: VALVE COVER	MP806200
23	1	FITTING: VENT HOSE	MP231263

GENERAL MOTORS

BASE MOTOR V8, BLOQUE PEQUEÑO, 5.0 & 5.7L - Block engine 350, V8 Small block

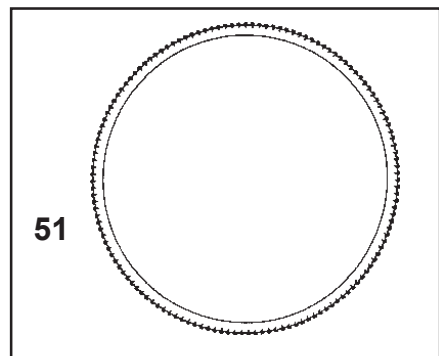
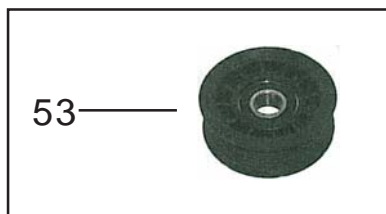
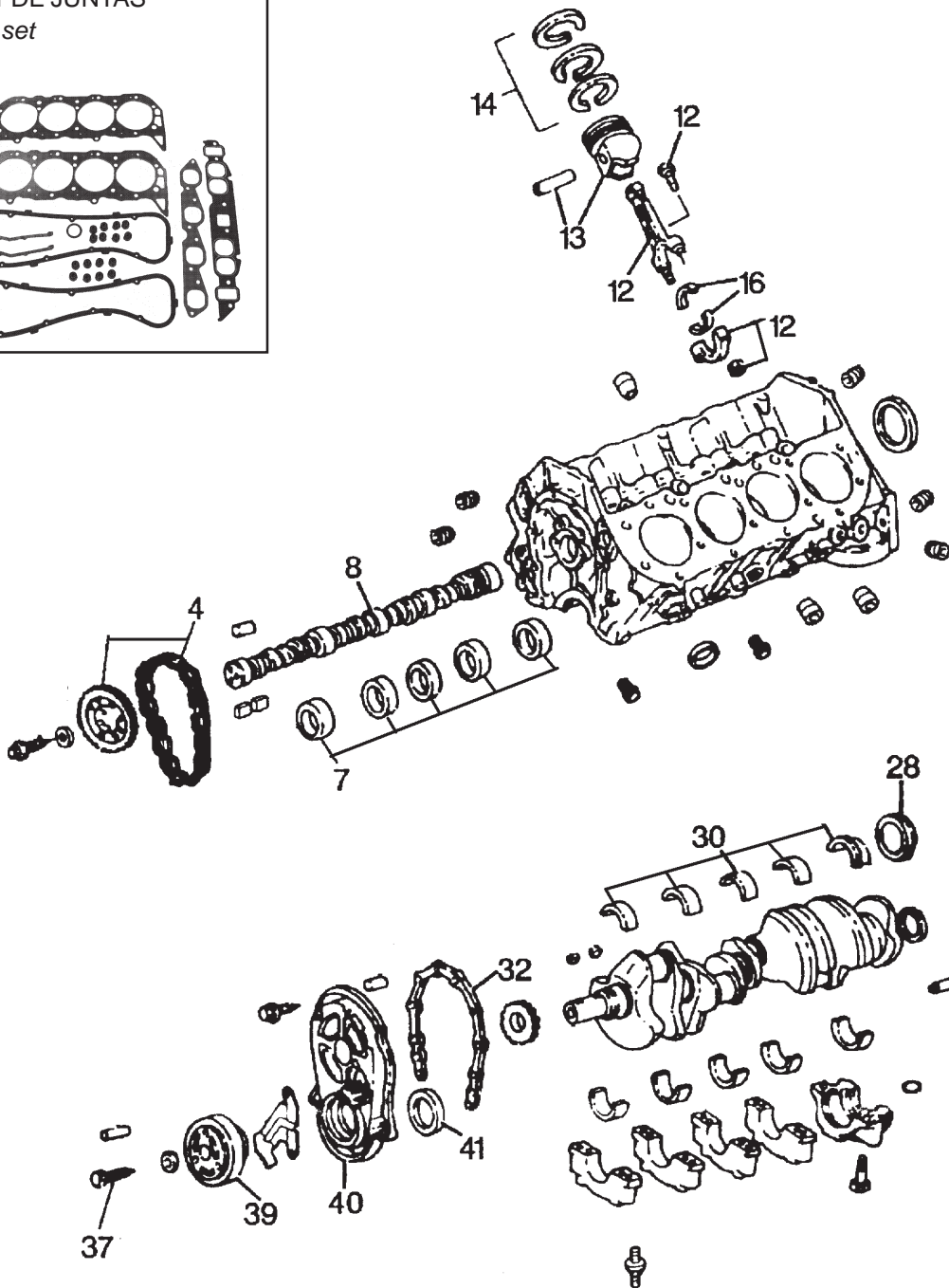
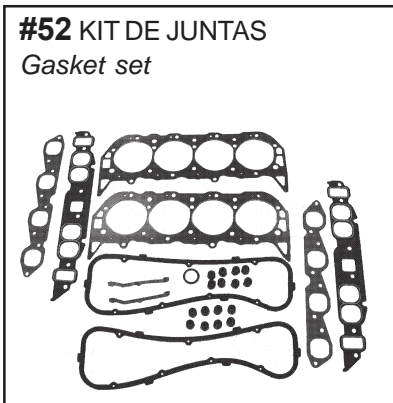


Nº #	CANTIDAD Qty. needed	DESCRIPCIÓN - Description	REFERENCIA - Reference
1	8	SPARK PLUG: V8	See engine model / Ver marca de motor
2	1	IGNITION WIRE: SET V8	See engine model / Ver marca de motor
3	1	COIL: DELCO E.I.	REC3854002
6	1	WIRE LEAD: COIL DIST	MP500428
7	1	MODULE: DELCO	REC3854003
8	1	IGNITION WIRE: SHIFT INTRPTR	MP500492
9	1	TOOL: TIMING	MP009159
10	1	DISTRIBUTOR V8 DELCO E.I.	MP480169
		Incluye 7, 11 & 12 Included	
11	1	ROTOR: V8 DELCO E.I.	REC3854549
12	1	CAP: V8 DELCO E.I.	REC3854548
13	1	WIRE LEAD: COIL HARNESS	MP500442

GENERAL MOTORS

BASE MOTOR V8, BLOQUE GRANDE, 7.4L y 8.2L - Block engine V8 Big block

#52 KIT DE JUNTAS
Gasket set



GENERAL MOTORS

BASE MOTOR V8, BLOQUE GRANDE, 7.4L y 8.2L - *Block engine V8 Big block*

Nº #	CANTIDAD Qty. needed	DESCRIPCIÓN Description	REFERENCIA Reference 7.4	REFERENCIA Reference 8.2
4	1	KIT TIMING CHAIN MKIV	REC12504	-
4	1	KIT TIMING CHAIN GENE V & VI	REC12505	REC12505
7	1	BEARING KIT: CAMSHAFT MKIV	REC13017	-
7	1	BEARING KIT: CAMSHAFT GENE V	SIE18-1305	SIE18-1305
8	1	CAMSHAFT: MKIV & GENE V	REC10254	REC10255
12	8	CONNECTING ROD MKIV, GENE V & VI	MP0003-036	MP0003-036
13	8	PISTON: MKIV Std	REC10011	-
13	8	PISTON: MKIV Std Magnum	REC10014	-
13	8	PISTON: MKIV 030	REC10012	-
13	8	PISTON: MKIV 030 Magnum	REC10017	-
13	8	PISTON: GENE V Std 91-95	MP0053-037F8	-
13	8	PISTON: GENE V 030 91-95	-	RM737-811602
14	8	RING SET MKIV Std	REC11012	-
14	8	RING SET MKIV Std Magnum	REC11019	-
14	8	RING SET MKIV 030	REC11013	-
14	8	RING SET MKIV 030 Magnum	REC11018	-
14	8	RING SET GENE V & VI Std	REC11014	-
14	8	USE CODE GM 4XW, 5XW, 4XX, 5XX, 4XA, 5XA RING SET GENE V & VI 030	REC11015	-
14	8	USE CODE GM 4XW, 5XW, 4XX, 5XX, 4XA, 5XA RING SET 8.2 Std MKIV & GENE V	-	REC11017
16	8	BEARING CONNECTING ROD MKIV	REC13022	-
16	8	BEARING CONNECTING ROD MKIV 010	REC13018	-
16	8	BEARING CONNECTING ROD GENE V	REC13019	REC13022
16	8	BEARING CONNECTING ROD GENE V 010	REC13018	-
28	1	SEAL: CRANKSHFT OIL REAR NR	-	REC26-811554
28	1	SEAL: CRANKSHAFT 454 MKIV	REC26-14756	REC26-14756
28	1	SEAL: CRANKSHAFT CONTRARROTACION <i>Oposite rot.</i>	FEL17740	FEL17440
30	1	KIT BEARING CRANKSHAFT 7.4 MKIV, GENE V, GENE VI	REC13020	REC13020
30	1	KIT BEARING CRANKSHAFT 7.4 MKIV, GENE V, GENE VI - 010	REC13021	REC13021
30	1	KIT BEARING CRANKSHAFT 8.2	REC13020	REC13020
30	1	KIT BEARING CRANKSHAFT 8.2 - 010	REC13021	REC13021
32	1	GASKET: TIMING COVER GENE V	MP0053-061F8	MP0053-061F8
32	1	GASKET: TIMING COVER MKIV	GLM30440	GLM30440
37	1	BOLT: CRANKSHAFT	MP0053-002F3	MP0053-002F3
39	1	DAMPER: TORSIONAL 454 NR	MP0053-004F8	MP0053-004F8
40	1	COVER: TIMING GEN V NR 1992-1995	MP0053-058F8	MP0053-058F8
40	1	COVER: TIMING GEN VI NP 1995 +	MP0053-060	MP0053-060
40	1	COVER: TIMING 454 MKIV	REC15255	REC15255
41	1	SEAL: CRANKSHAFT OIL FRONT GENE IV,V,VI	MP0053-005	MP0053-005
51	1	GEAR RING 157 Teeth Ø 12" - Corona dentada	REC157-N	REC157-N
51	1	GEAR RING 168 Teeth Ø 13-3/4" - Corona dentada	REC1685	REC1685
51	1	GEAR RING 180 Teeth Ø 14-1/2" - Corona dentada	FED416-124	FED416-124
52	1	GASKET SET MKIV	FEL17240	FEL17241
52	1	GASKET SET MKIV 385,400,420 & 425 HP	FEL17246	-
52	1	GASKET SET GENE V Only EFI	FEL17280	FEL17280
52	1	GASKET SET GENE V Except EFI	FEL17242	FEL17243
52	1	GASKET SET GENE VI Except EFI	FEL17242	FEL17201
52	1	GASKET SET 8.2L MKIV	-	FEL17248
52	1	GASKET SET 8.2L GENE V	-	FEL17249
52	1	GASKET SET 8.2L GENE V EFI	-	FEL17281
52	1	GASKET SET 8.2L GENE VI EFI	-	FEL17207
53	1	SERPENTINE PULLEY MCM (Plastic)	SIE18-6457	-
54	1	DUAL GROOVE CRANKSHAFT PULLEY Ø 6-3/4" Height 1-5/8"	MP514720	MP514720

GENERAL MOTORS

BASE MOTOR V8, BLOQUE GRANDE, 7.4L y 8.2L - *Block engine V8 Big block*

FEL17440

KIT JUNTAS COLECTOR

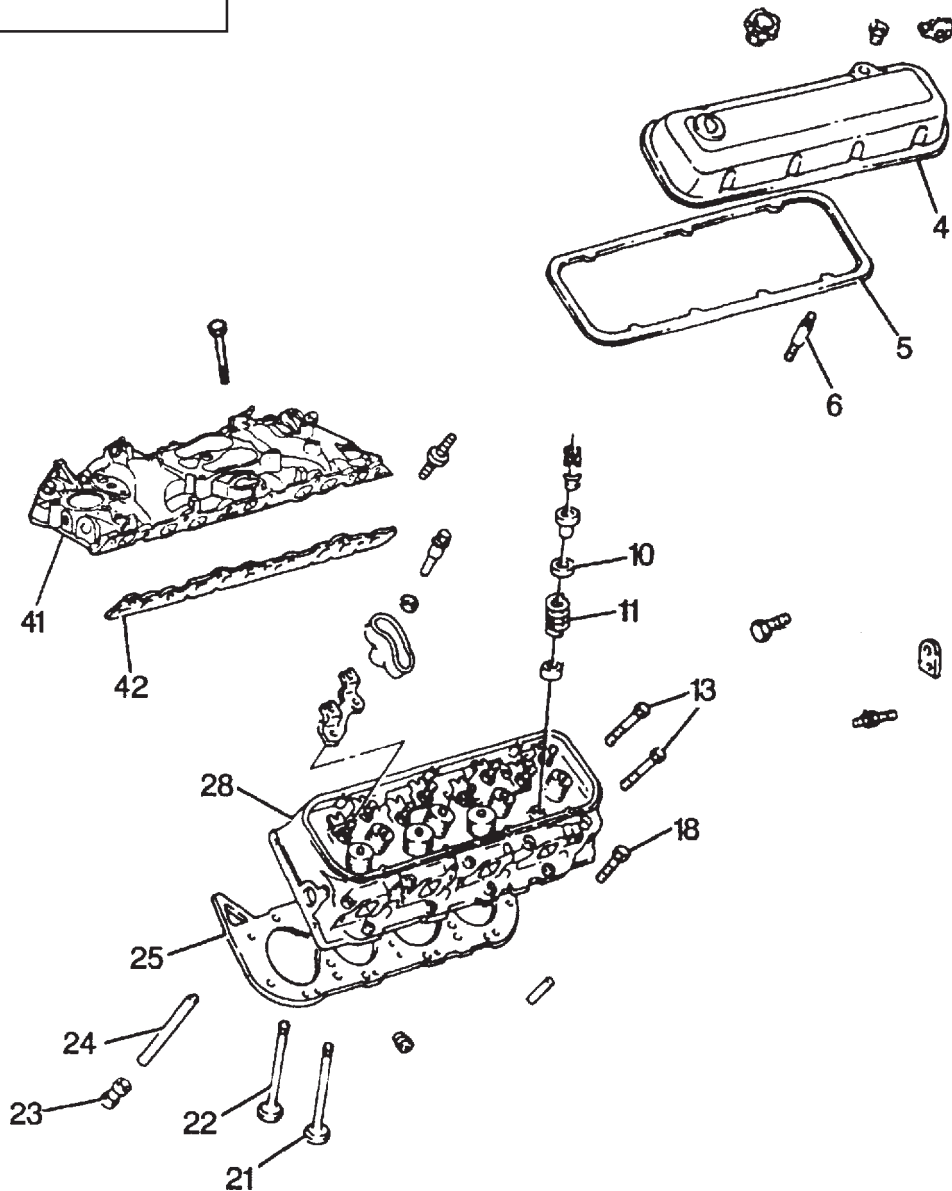
Manifold gasket set



GLM33760

JUNTA COLECTOR

Manifold gasket



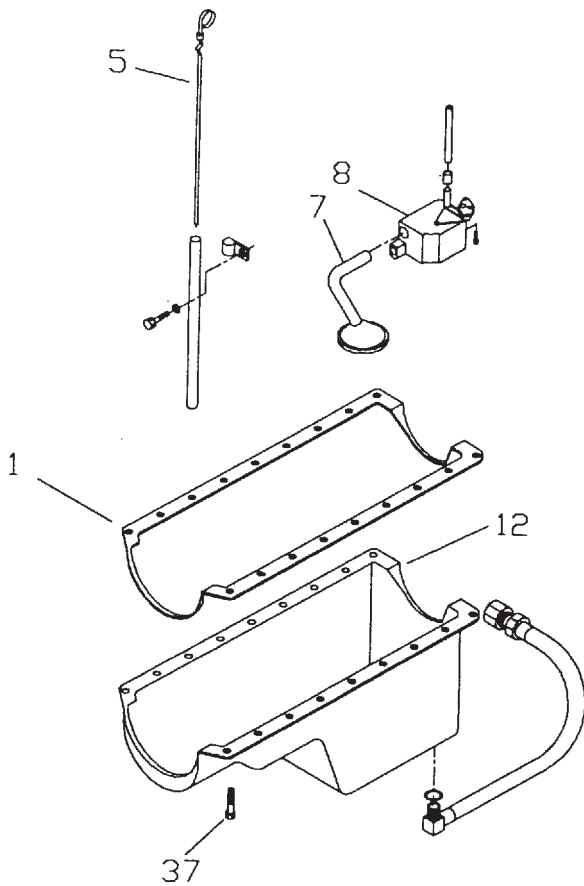
GENERAL MOTORS

BASE MOTOR V8, BLOQUE GRANDE, 7.4L y 8.2L - *Block engine V8 Big block*

Nº #	CANTIDAD Qty. needed	DESCRIPCIÓN Description	REFERENCIA Reference 7.4	REFERENCIA Reference 8.2
4	2	VALVE COVER: MKIV	REC14204	-
5	2	GASKET KIT: VALVE COVER GENE V & VI	FEL17937	FEL17937
5	2	GASKET KIT: VALVE COVER MKIV	FEL17935	FEL17935
6	14	BOLT: VALVE COVER	MP0025-107	MP0025-107
10	16	SEAL: VALVE STEM OIL MKIV	SIE18-4022	SIE18-4022
10	16	SEAL: VALVE STEM OIL GENE V & VI	REC26-827645	REC26-827645
11	16	SPRING: VALVE MKIV, GENE V	REC11502	RM24-801879
11	16	SPRING: VALVE 1996-98 GENE VI	RM24-850465T	-
13	24	BOLT: CYL HEAD LONG	MP0003-027	MP0003-027
18	8	BOLT: CYL HEAD SHORT	MP0003-029	MP0003-029
21	8	VALVE: INTAKE 1982-98 MKIV, GEN V & VI	REC13511 (52,5-9,2-133)	
21	8	VALVE: INTAKE 1986-88 MKIV		REC13511 (52,5-9,2-133)
21	8	VALVE: INTAKE 1988-96 MKIV, GENE V		RM801877 (56-9,3-133)
22	8	VALVE: EXHAUST 1982-87 MKIV	REC13512 (44-9,2-136)	
22	8	VALVE: EXHAUST 1988-98 MKIV, GENE V & VI	REC13513 (44-9,2-136)	
22	8	VALVE: EXHAUST 1986-88 MKIV		REC13512 (44-9,2-136)
22	8	VALVE: EXHAUST 1988-97 MKIV & GENE V		RM816962 (48-9,3-136)
23	16	LIFTER VALVE MKIV	REC14000	RM811583
23	16	LIFTER VALVE GENE V	REC14003	REC14003
24	8	PUSH ROD: INTAKE VALVE MKIV (Ø 10)	REC12005	REC12006
24	8	PUSH ROD: INTAKE VALVE MKIV (Ø 8)	REC12007	
24	6	PUSH ROD: EXHAUST VALVE MKIV (Ø 8)	REC12008	REC12010
24	6	PUSH ROD: EXHAUST VALVE MKIV (Ø 8)	REC12009	
25	2	GASKET: CYL HEAD MKIV	FEL17040	FEL17049
25	2	GASKET: CYL HEAD GEN V & VI	FEL17042	FEL17042
25	2	GASKET: CYL HEAD 385,400,420,425 hp (7.4L)	-	FEL17046
25	2	GASKET: CYL HEAD 8.2L MKIV,GENE V & VI	-	FEL17048
25	2	GASKET: CYL HEAD 8.9L (525 & 950 hp)	-	FEL17048
25	2	GASKET: CYL HEAD 9.4L (750 hp)	-	FEL17048
28	2	HEAD	<i>See First Mate - Ver First Mate</i>	
41	1	MANIFOLD: INT MKIV & GENE V	MP425113	MP425149
42	2	GASKET KIT: INT MANIFOLD GEN V & VI	FEL17340	FEL17341
42	2	GASKET KIT: INT MANIFOLD MKIV	FEL17340	FEL17341
42	2	GASKET KIT: INT MANIFOLD GEN V & VI EFI Up to 1997	FEL17342	FEL17342
42	2	GASKET KIT: INT MANIFOLD GEN VI MPI 1998-2000	REC27-803184	-
42	2	GASKET KIT: INT MANIFOLD 8.2L	-	FEL17341
42	2	GASKET KIT: INT MANIFOLD 8.2L EFI	-	FEL17342

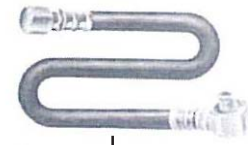
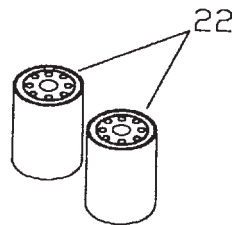
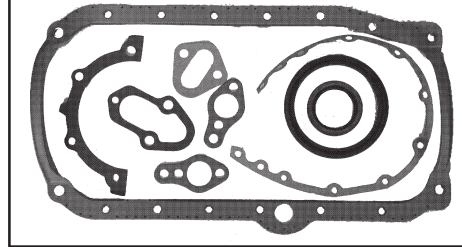
GENERAL MOTORS

BASE MOTOR V8, BLOQUE GRANDE, 7.4L y 8.2L - *Block engine V8 Big block*



39 KIT DE JUNTAS

Gasket set

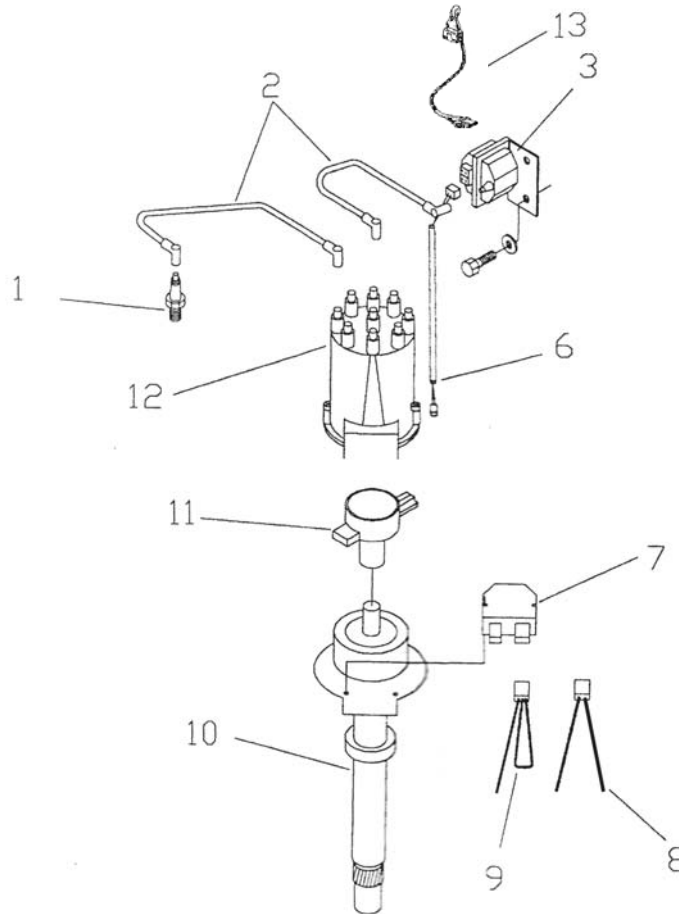


41

Nº #	CANTIDAD Qty. needed	DESCRIPCIÓN Description	REFERENCIA Reference 7.4	REFERENCIA Reference 8.2
1	1	GASKET: OIL PAN 7.4 & 8.2L GEN V & VI	FEL17986	FEL17986
1	1	GASKET: OIL PAN 7.4 & 8.2L MKIV	FEL17985	FEL17985
5	1	DIPSTICK: 454	MP0303-001	MP0303-001
7	1	SCREEN: OIL PUMP	MP0005-256	MP0005-256
8	1	PUMP: OIL GENE IV	REC14102	REC14102
8	1	PUMP: OIL GENE V	MP0053-255F8	MP0053-255F8
12	1	OIL PAN: 454 PLASTISOL GENE V	MP370039	-
22	2	OIL FILTER	See Filters per engine's brand Ver Filtros por marca motor	
37	1	BOLT OIL PAN KIT	RECPNRS-1101	RECPNRS-1101
39	1	GASKET SET MKIV (4 oil pan gaskets 2 rear seal) (4 juntas cárter 2 piezas retén)	FEL17140	FEL17140
39	1	GASKET SET GENE V (1 oil pan gasket 1 rear seal) (1 junta cárter 1 pieza retén)	FEL17145	FEL17145
39	1	GASKET SET GENE VI	FEL17146	FEL17146
39	1	GASKET SET 8.2L MKIV	-	FEL17140
39	1	FEL17140 8.2L EFI GENE V	-	FEL17145
39	1	GASKET SET 8.2L EFI GENE VI	-	FEL17146
41	1	DRAIN HOSE MCM-OMC 1/2"	MPI305-0380	-
41	1	DRAIN HOSE VOLVO 3/4"	MPI307-0380	-
41	1	DRAIN HOSE Metric FORD 14mm	MPI309-0380	-

GENERAL MOTORS

BASE MOTOR V8, BLOQUE GRANDE, 7.4L y 8.2L - *Block engine V8 Big block*

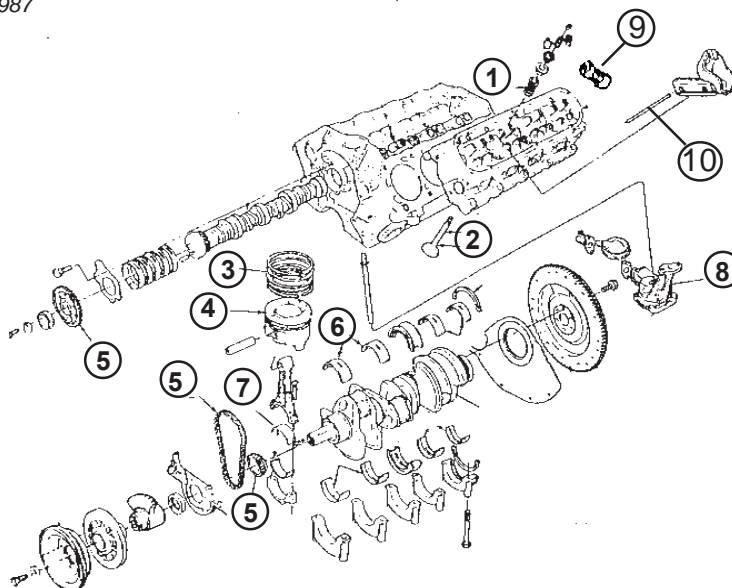


Nº #	CANTIDAD Qty. needed	DESCRIPCIÓN Description	REFERENCIA Reference	REFERENCIA Reference
			7.4	8.2
1	8	SPARK PLUG: V8	See engine's brand / Ver marca de motor	
2	1	IGNITION WIRE SET: V8	See engine's brand / Ver marca de motor	
3	1	COIL: IGNITION	REC3854002	
6	1	WIRE LEAD: DIST--COIL	MP500428	
7	1	MODULE: DISTRIBUTOR	REC3854003	
8	1	WIRE: SHIFT INTERUPTER	MP500492	
9	1	TOOL: TIMING	MP009159	
10	1	DISTRIBUTOR: DELCO V8 E.I. Incluye 7, 11 & 12 Included	MP480169	
11	1	ROTOR: DISTRIBUTOR	REC3854311	
12	1	CAP: DISTRIBUTOR	REC3854331	
13	1	WIRE LEAD: COIL HARNESS	MP500442	

BASE MOTOR FORD 302/5.0L y 351/5.8L - Ford block engine

FORD 302 - OMC 175 - 190 - MERCURUISER 888 - 215 - 225 - VOLVO AQ 190A
FORD 351 - OMC 235 - 240 - 250 - MERCURUISER 233 - 255 - VOLVO AQ 240A

Nº #	DESCRIPCIÓN Description	REFERENCIA Reference	Nº #	DESCRIPCIÓN Description	REFERENCIA Reference
1	MUELLE ADMISIÓN 5.0 intake spring 5.0	FEDVS-718	5	KIT DISTRIBUCIÓN 5.0 HASTA 1986 Timing kitn5.0 up to 1986	FEDKT3358SA
1	MUELLE ESCAPE 5.0 Exhaust spring 5.0	FEDVS-733	5	KIT DISTRIBUCIÓN 5.8 DESDE 1988 Timing kit 5.8 from 1988	FEDKT3163SA1
1	MUELLE ADMISIÓN 5.8 Intake spring 5.8	FEDVS-918	5	KIT DISTRIBUCIÓN 5.8 HASTA 1986 Timing kit 5.8 up to 1986	FEDKT3358SA
1	MUELLE ESCAPE 5.8 Exhaust Spring 5.8	FEDVS-733	6	KIT COJINETES BANKADA 5.0 Main bearing set 5.0	FED4125M
2	VALVULA DE ESCAPE 5.0 Exhaust valve 5.0	FEDV-1961	6	KIT COJINETES BANKADA 5.8 Maing bearing set 5.8	FED5078M
2	VALVULA DE ADMISIÓN 5.0 Intake valve 5.0	FEDV-2045	6	KIT COJINETES BANCADA 5.0 A 010 Main bearing set 5.0 - 010	FED4125M010
2	VALVULA DE ESCAPE 5.8 Exhaust valve 5.8	FEDV-1961	6	KIT COJINETES BANCADA 5.8 A 010 Main bearing set 5.8 - 010	FED5078M010
2	VALVULA ADMISIÓN 5.8 Intake valve 5.8	FEDV-2045	7	COJINETES BIELA 5.0 Bearing rod 5.0	FED2600CP
3	AROS PISTÓN 5.0 y 5.8 Piston rings 5.0 & 5.8	FEDE-251K	7	COJINETES BIELA 5.8 Bearing rod 5.8	FED 3380CPA
3	AROS PISTÓN A 030 Piston rings 030	FEDE251K030	8	BOMBA ACEITE 5.0 Oil pump 5.0	FED224-41118
4	PISTÓN 5.0 DESDE 1987 Piston 5.0 from 1987	FED517P	8	BOMBA DE ACEITE 5.8 Oil pump 5.8	FED224-41143
4	PISTÓN 5.0 A 030 DESDE 1987 Piston 5.0 030 from 1987	FED517P030	9	LIFTER 5.0, 5.8 y 460 Lifter 5.0, 5.8 y 460	FEDHT900
4	PISTÓN 5.8 DESDE 1977 Piston 5.8 up to 1977	FED463P	9	LIFTER 5.0, 5.8 y (1992-2001) Lifter 5.0, 5.8 y (1992-2001)	FEDHT900
4	PISTÓN 5.8 A 030 DESDE 1977 Piston 5.8 030 nup to 1977	FED463P030	10	VARILLA EMPUJADORA 5.0 (174,5) Push Road 5.0 (174,5)	FEDRP3167
4	PISTÓN 5.0 DESDE 1977 Piston 5.0 from 1977	FED463P	10	VARILLA EMPUJADORA 5.0 (158,75) Push Road 5.0 (158,75)	FEDRP3241
4	PISTÓN 5.0 A 030 DESDE 1977 Piston 5.0 030 from 1977	FED463P030	10	VARILLA EMPUJADORA 5.8 (174.5) Push Road 5.8 (174.5)	FEDVRP3166
5	KIT DISTRIBUCIÓN 5.0 DESDE 1987 Timing kit 5.0 from 1987	FEDKT3163SA1			



FORD

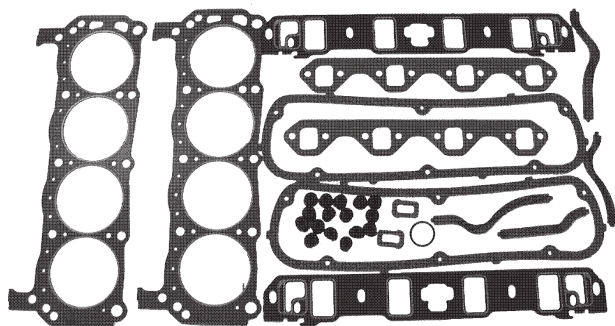
BASE MOTOR FORD 302/5.0L y 351/5.8L - Ford block engine

FORD 302 - OMC 175 - 190 - MERCURUISER 888 - 215 - 225 - VOLVO AQ 190A
FORD 351 - OMC 235 - 240 - 250 - MERCURUISER 233 - 255 - VOLVO AQ 240A

DESCRIPCIÓN - <i>Description</i>	5.0L	5.8L
JUNTA CULATA <i>Head gasket</i>	FEL17060	FEL17060
KIT JUNTAS SUPERIOR <i>Upper gasket set</i>	FEL17260	FEL17260
KIT JUNTAS CON TAPA VÁLVULAS ALUMINIO <i>Gasket set Aluminum valve cover</i>	FEL17261	FEL17261
KIT JUNTAS INFERIOR (1 Junta cárter, 1 retén trasero) <i>Lower gasket set (1 oil pan gasket, 1 piece rear seal)</i>	FEL17161	FEL17166
KIT JUNTAS INFERIOR (4 Juntas cárter, retén trasero de 2 piezas) <i>Lower gasket set (4 oil pan gaskets, 2 pieces rear seal)</i>	FEL17160	FEL17165
KIT JUNTAS COLECTOR ADMISIÓN <i>Intake manifold gasket set</i>	FEL17360	FEL17360
KIT JUNTAS COLECTOR ESCAPE <i>Exhaust manifold gasket set</i>	FEL17460	FEL17460
JUNTA CARTER 1pieza <i>1 piece Oil pan gasket</i>	FEL17997	FEL17998
JUNTA CARTER 4 piezas <i>4 pieces Oil pan gasket</i>	FEL17995	FEL17996
KIT JUNTAS TAPA VÁLVULAS <i>Valve cover gasket set</i>	FEL17945	FEL17945
KIT JUNTAS TAPA VÁLVULAS ALUMINIO <i>Aluminum valve cover gasket set</i>	FEL17946	FEL17946
RETÉN TRASERO CIGÜEÑAL CONTRARROTACIÓN <i>Crankshaft rear seal Opposite rotation</i>	FEL17746	FEL17748
RETÉN TAPA DISTRIBUIDOR <i>Distributor cap seal</i>	FEL17795	FEL17795

FEL17260

KIT JUNTAS SUPERIOR
Upper gasket kit



FEL17166

KIT JUNTAS INFERIOR
Lower gasket kit

